

Project 1

Partner for Contact:
Order No.:
Company:
Customer No.:

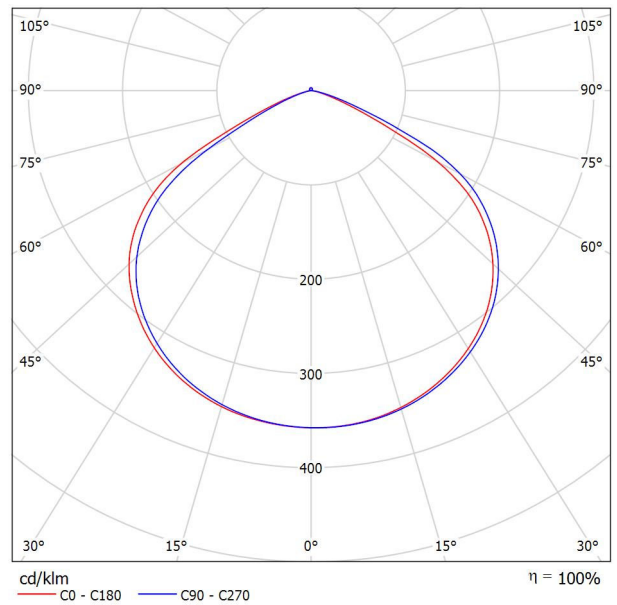
Date: 19.09.2021
Operator:

Operator
Telephone
Fax
e-Mail

Coydon Lighting KD-FHBL180-W200 UFO LED High Bay lights 120D / Luminaire Data Sheet

See our luminaire catalog for an image of the luminaire.

Luminous emittance 1:

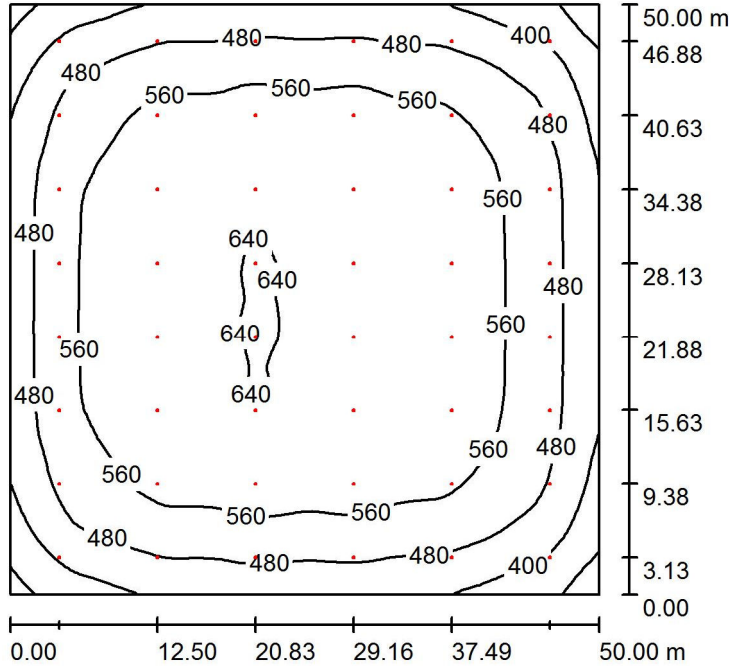


Luminaire classification according to CIE: 99
CIE flux code: 51 89 99 99 100

Due to missing symmetry properties, no UGR table can be displayed for this luminaire.

Operator
Telephone
Fax
e-Mail

Room 1 / Summary



Height of Room: 10.000 m, Mounting Height: 10.000 m, Light loss factor: 0.80

Values in Lux, Scale 1:642

Surface	ρ [%]	E_{av} [lx]	E_{min} [lx]	E_{max} [lx]	u_0
Workplane	/	538	278	644	0.516
Floor	20	529	269	640	0.509
Ceiling	70	114	89	655	0.781
Walls (4)	50	251	87	472	/

Workplane:

Height: 0.850 m
Grid: 64 x 64 Points
Boundary Zone: 0.000 m

Luminaire Parts List

No.	Pieces	Designation (Correction Factor)	Φ (Luminaire) [lm]	Φ (Lamps) [lm]	P [W]
1	48	200W UFO LED High Bay Light (Type 1)* (1.000)	36593	36595	198.0

*Modified Technical Specifications

Total: 1756488 Total: 1756560 9504.0

Specific connected load: $3.80 \text{ W/m}^2 = 0.71 \text{ W/m}^2/100 \text{ lx}$ (Ground area: 2500.00 m^2)

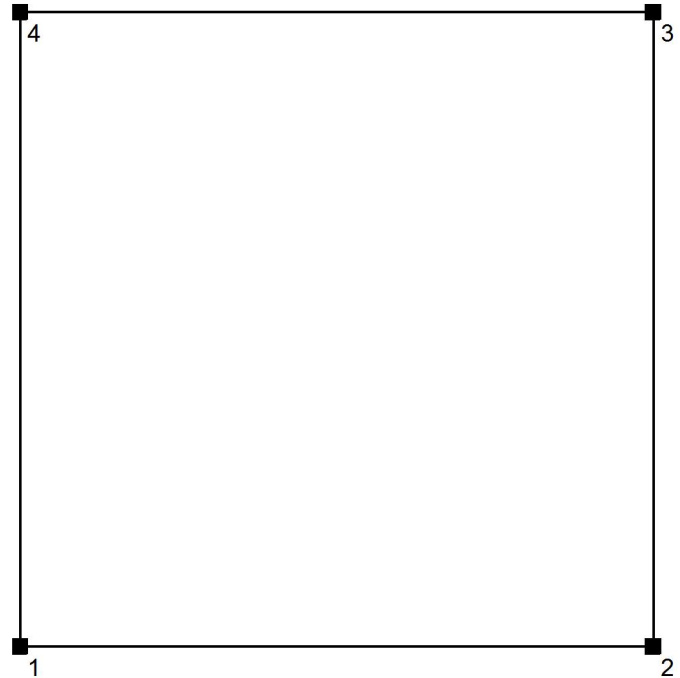
Operator
Telephone
Fax
e-Mail

Room 1 / Input Protocol

Height of working plane: 0.850 m
Boundary Zone: 0.000 m

Light loss factor: 0.80

Height of Room: 10.000 m
Ground area: 2500.00 m²

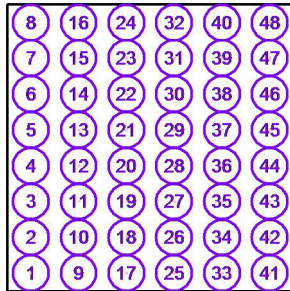


Surface	Rho [%]	from ([m] [m])	towards ([m] [m])	Length [m]
Floor	20	/	/	/
Ceiling	70	/	/	/
Wall 1	50	(0.000 0.000)	(50.000 0.000)	50.000
Wall 2	50	(50.000 0.000)	(50.000 50.000)	50.000
Wall 3	50	(50.000 50.000)	(0.000 50.000)	50.000
Wall 4	50	(0.000 50.000)	(0.000 0.000)	50.000

Operator
Telephone
Fax
e-Mail

Room 1 / Luminaires (coordinates list)

Coydon Lighting KD-FHBL180-W200 UFO LED High Bay lights 120D (Type 1)
36593 lm, 198.0 W, 1 x 1 x User defined (Correction Factor 1.000).



No.	Position [m]			Rotation [°]		
	X	Y	Z	X	Y	Z
1	4.170	3.130	10.000	0.0	0.0	90.0
2	4.170	9.380	10.000	0.0	0.0	90.0
3	4.170	15.630	10.000	0.0	0.0	90.0
4	4.170	21.880	10.000	0.0	0.0	90.0
5	4.170	28.130	10.000	0.0	0.0	90.0
6	4.170	34.380	10.000	0.0	0.0	90.0
7	4.170	40.630	10.000	0.0	0.0	90.0
8	4.170	46.880	10.000	0.0	0.0	90.0
9	12.500	3.130	10.000	0.0	0.0	90.0
10	12.500	9.380	10.000	0.0	0.0	90.0
11	12.500	15.630	10.000	0.0	0.0	90.0
12	12.500	21.880	10.000	0.0	0.0	90.0
13	12.500	28.130	10.000	0.0	0.0	90.0
14	12.500	34.380	10.000	0.0	0.0	90.0
15	12.500	40.630	10.000	0.0	0.0	90.0
16	12.500	46.880	10.000	0.0	0.0	90.0
17	20.830	3.130	10.000	0.0	0.0	90.0
18	20.830	9.380	10.000	0.0	0.0	90.0
19	20.830	15.630	10.000	0.0	0.0	90.0
20	20.830	21.880	10.000	0.0	0.0	90.0
21	20.830	28.130	10.000	0.0	0.0	90.0
22	20.830	34.380	10.000	0.0	0.0	90.0
23	20.830	40.630	10.000	0.0	0.0	90.0
24	20.830	46.880	10.000	0.0	0.0	90.0
25	29.160	3.130	10.000	0.0	0.0	90.0
26	29.160	9.380	10.000	0.0	0.0	90.0
27	29.160	15.630	10.000	0.0	0.0	90.0
28	29.160	21.880	10.000	0.0	0.0	90.0

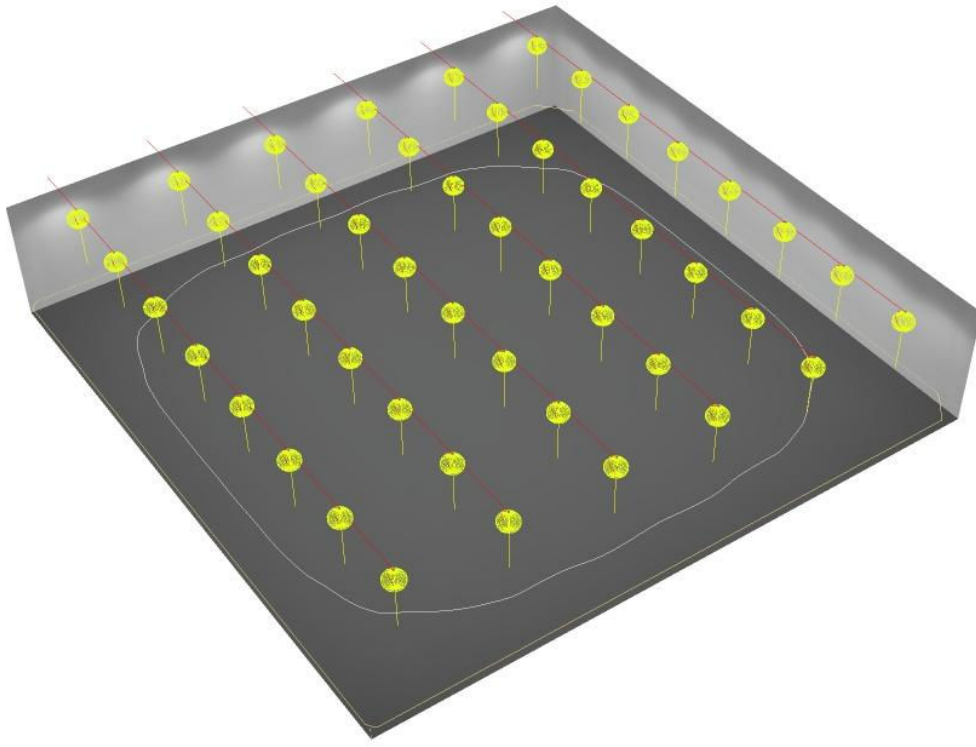
Operator
Telephone
Fax
e-Mail

Room 1 / Luminaires (coordinates list)

No.	Position [m]			Rotation [°]		
	X	Y	Z	X	Y	Z
29	29.160	28.130	10.000	0.0	0.0	90.0
30	29.160	34.380	10.000	0.0	0.0	90.0
31	29.160	40.630	10.000	0.0	0.0	90.0
32	29.160	46.880	10.000	0.0	0.0	90.0
33	37.490	3.130	10.000	0.0	0.0	90.0
34	37.490	9.380	10.000	0.0	0.0	90.0
35	37.490	15.630	10.000	0.0	0.0	90.0
36	37.490	21.880	10.000	0.0	0.0	90.0
37	37.490	28.130	10.000	0.0	0.0	90.0
38	37.490	34.380	10.000	0.0	0.0	90.0
39	37.490	40.630	10.000	0.0	0.0	90.0
40	37.490	46.880	10.000	0.0	0.0	90.0
41	45.820	3.130	10.000	0.0	0.0	90.0
42	45.820	9.380	10.000	0.0	0.0	90.0
43	45.820	15.630	10.000	0.0	0.0	90.0
44	45.820	21.880	10.000	0.0	0.0	90.0
45	45.820	28.130	10.000	0.0	0.0	90.0
46	45.820	34.380	10.000	0.0	0.0	90.0
47	45.820	40.630	10.000	0.0	0.0	90.0
48	45.820	46.880	10.000	0.0	0.0	90.0

Operator
Telephone
Fax
e-Mail

Room 1 / 3D Rendering



Operator
Telephone
Fax
e-Mail

Room 1 / False Color Rendering

