

Project 1

Partner for Contact:
Order No.:
Company:
Customer No.:

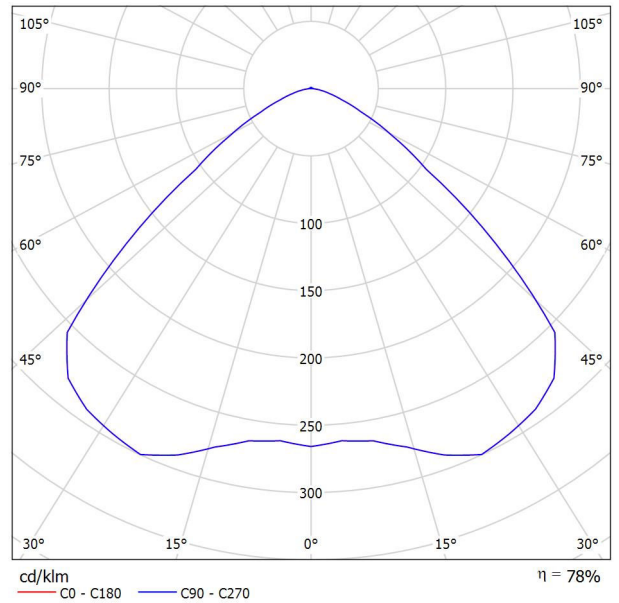
Date: 19.09.2021
Operator:

Operator
 Telephone
 Fax
 e-Mail

Stanpro Lighting Systems HBE-M0400 Bay Master - Industrial High Bay / Luminaire Data Sheet

Luminous emittance 1:

See our luminaire catalog for an image of the luminaire.



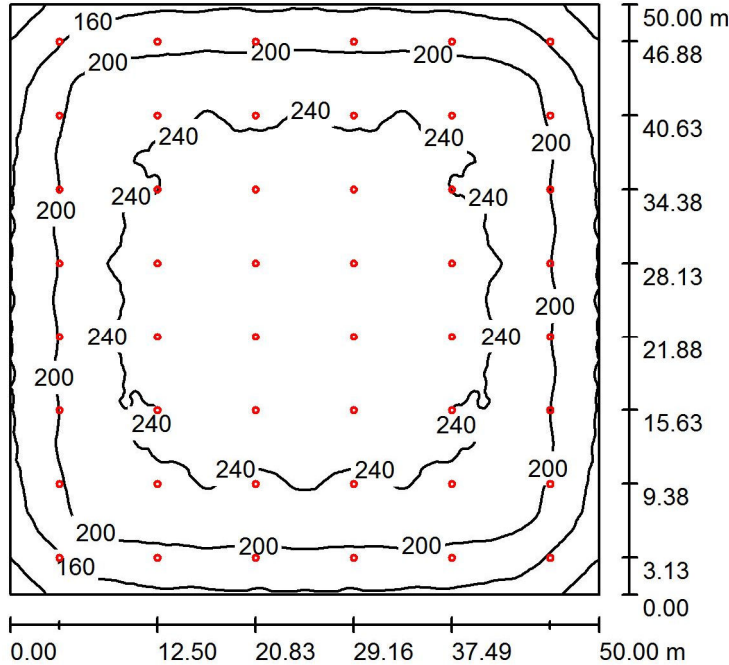
Luminaire classification according to CIE: 99
 CIE flux code: 58 92 99 99 78

Luminous emittance 1:

Glare Evaluation According to UGR											
ρ Ceiling	70	70	50	50	30	70	70	50	50	30	
ρ Walls	50	30	50	30	30	50	30	50	30	30	
ρ Floor	20	20	20	20	20	20	20	20	20	20	
Room Size X Y	Viewing direction at right angles to lamp axis					Viewing direction parallel to lamp axis					
2H	2H	23.5	24.6	23.8	24.8	25.1	23.5	24.6	23.8	24.8	25.1
	3H	23.5	24.6	23.9	24.8	25.1	23.5	24.6	23.9	24.8	25.1
	4H	23.5	24.5	23.8	24.7	25.0	23.5	24.5	23.8	24.7	25.0
	6H	23.5	24.3	23.8	24.6	25.0	23.5	24.3	23.8	24.6	25.0
	8H	23.4	24.3	23.8	24.6	24.9	23.4	24.3	23.8	24.6	24.9
4H	12H	23.4	24.2	23.8	24.5	24.9	23.4	24.2	23.8	24.5	24.9
	2H	23.5	24.4	23.8	24.7	25.0	23.5	24.4	23.8	24.7	25.0
	3H	23.6	24.4	24.0	24.7	25.1	23.6	24.4	24.0	24.7	25.1
	4H	23.6	24.3	24.0	24.7	25.1	23.6	24.3	24.0	24.7	25.1
	6H	23.6	24.2	24.0	24.6	25.0	23.6	24.2	24.0	24.6	25.0
8H	8H	23.6	24.1	24.0	24.5	25.0	23.6	24.1	24.0	24.5	25.0
	12H	23.5	24.0	24.0	24.5	24.9	23.5	24.0	24.0	24.5	24.9
	4H	23.6	24.1	24.0	24.5	24.9	23.6	24.1	24.0	24.5	24.9
	6H	23.5	24.0	24.0	24.4	24.9	23.5	24.0	24.0	24.4	24.9
	8H	23.5	23.9	24.0	24.4	24.9	23.5	23.9	24.0	24.4	24.9
12H	12H	23.5	23.8	24.0	24.3	24.8	23.5	23.8	24.0	24.3	24.8
	4H	23.5	24.0	24.0	24.4	24.9	23.5	24.0	24.0	24.4	24.9
	6H	23.5	23.9	24.0	24.4	24.9	23.5	23.9	24.0	24.4	24.9
	8H	23.5	23.8	24.0	24.3	24.8	23.5	23.8	24.0	24.3	24.8
	8H	23.5	23.8	24.0	24.3	24.8	23.5	23.8	24.0	24.3	24.8
Variation of the observer position for the luminaire distances S											
S = 1.0H	+1.3 / -1.8					+1.3 / -1.8					
S = 1.5H	+2.2 / -3.7					+2.2 / -3.7					
S = 2.0H	+3.7 / -5.6					+3.7 / -5.6					
Standard table	BK01					BK01					
Correction Summand	4,9					4,9					
Corrected Glare Indices referring to 36000lm Total Luminous Flux											

Operator
Telephone
Fax
e-Mail

Room 1 / Summary



Height of Room: 10.000 m, Mounting Height: 10.000 m, Light loss factor: 0.80

Values in Lux, Scale 1:642

Surface	ρ [%]	E_{av} [lx]	E_{min} [lx]	E_{max} [lx]	u_0
Workplane	/	215	99	253	0.460
Floor	20	211	109	250	0.514
Ceiling	70	44	32	84	0.719
Walls (4)	50	91	37	179	/

Workplane:

Height: 0.850 m
Grid: 128 x 128 Points
Boundary Zone: 0.000 m

UGR

Left Wall
Lower Wall
(CIE, SHR = 0.25.)

Lengthways-
Across
to luminaire axis

Luminaire Parts List

No.	Pieces	Designation (Correction Factor)	Φ (Luminaire) [lm]	Φ (Lamps) [lm]	P [W]
1	48	Metal Halide High Bay Lights (Type 1)* (1.000)	14295	18360	408.0

*Modified Technical Specifications

Total: 686169 Total: 881280 19584.0

Specific connected load: $7.83 \text{ W/m}^2 = 3.65 \text{ W/m}^2/100 \text{ lx}$ (Ground area: 2500.00 m²)

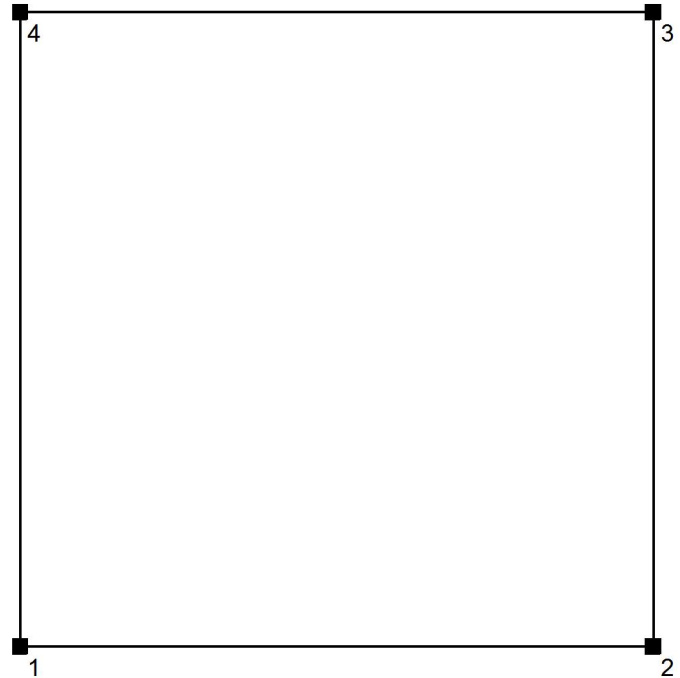
Operator
Telephone
Fax
e-Mail

Room 1 / Input Protocol

Height of working plane: 0.850 m
Boundary Zone: 0.000 m

Light loss factor: 0.80

Height of Room: 10.000 m
Ground area: 2500.00 m²

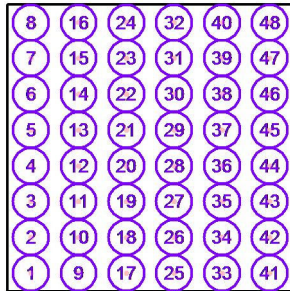


Surface	Rho [%]	from ([m] [m])	towards ([m] [m])	Length [m]
Floor	20	/	/	/
Ceiling	70	/	/	/
Wall 1	50	(0.000 0.000)	(50.000 0.000)	50.000
Wall 2	50	(50.000 0.000)	(50.000 50.000)	50.000
Wall 3	50	(50.000 50.000)	(0.000 50.000)	50.000
Wall 4	50	(0.000 50.000)	(0.000 0.000)	50.000

Operator
Telephone
Fax
e-Mail

Room 1 / Luminaires (coordinates list)

Stanpro Lighting Systems HBE-M0400 Bay Master - Industrial High Bay (Type 1)
14295 lm, 408.0 W, 1 x 1 x User defined (Correction Factor 1.000).



No.	Position [m]			Rotation [°]		
	X	Y	Z	X	Y	Z
1	4.170	3.130	10.000	0.0	0.0	90.0
2	4.170	9.380	10.000	0.0	0.0	90.0
3	4.170	15.630	10.000	0.0	0.0	90.0
4	4.170	21.880	10.000	0.0	0.0	90.0
5	4.170	28.130	10.000	0.0	0.0	90.0
6	4.170	34.380	10.000	0.0	0.0	90.0
7	4.170	40.630	10.000	0.0	0.0	90.0
8	4.170	46.880	10.000	0.0	0.0	90.0
9	12.500	3.130	10.000	0.0	0.0	90.0
10	12.500	9.380	10.000	0.0	0.0	90.0
11	12.500	15.630	10.000	0.0	0.0	90.0
12	12.500	21.880	10.000	0.0	0.0	90.0
13	12.500	28.130	10.000	0.0	0.0	90.0
14	12.500	34.380	10.000	0.0	0.0	90.0
15	12.500	40.630	10.000	0.0	0.0	90.0
16	12.500	46.880	10.000	0.0	0.0	90.0
17	20.830	3.130	10.000	0.0	0.0	90.0
18	20.830	9.380	10.000	0.0	0.0	90.0
19	20.830	15.630	10.000	0.0	0.0	90.0
20	20.830	21.880	10.000	0.0	0.0	90.0
21	20.830	28.130	10.000	0.0	0.0	90.0
22	20.830	34.380	10.000	0.0	0.0	90.0
23	20.830	40.630	10.000	0.0	0.0	90.0
24	20.830	46.880	10.000	0.0	0.0	90.0
25	29.160	3.130	10.000	0.0	0.0	90.0
26	29.160	9.380	10.000	0.0	0.0	90.0
27	29.160	15.630	10.000	0.0	0.0	90.0
28	29.160	21.880	10.000	0.0	0.0	90.0

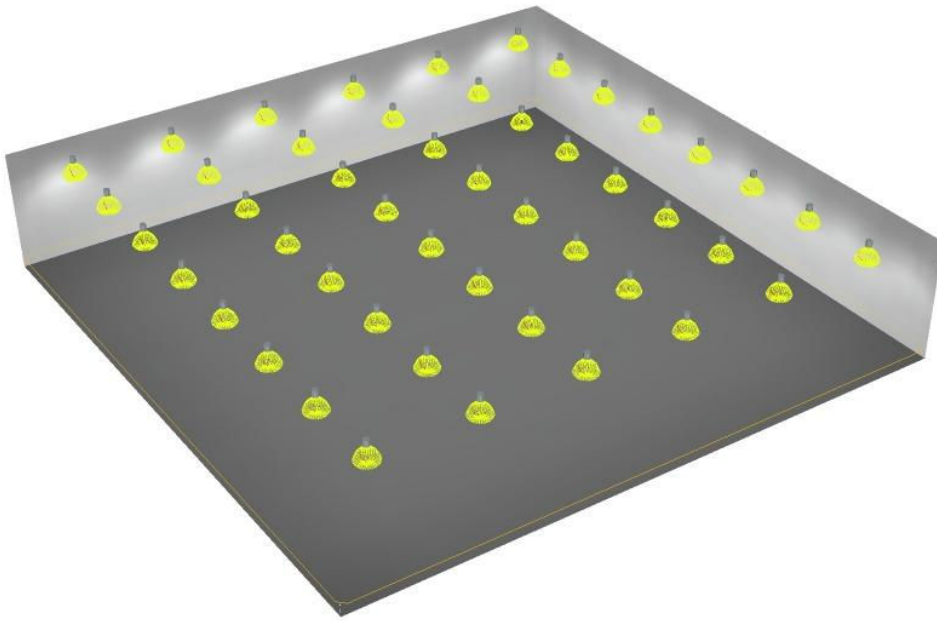
Operator
Telephone
Fax
e-Mail

Room 1 / Luminaires (coordinates list)

No.	Position [m]			Rotation [°]		
	X	Y	Z	X	Y	Z
29	29.160	28.130	10.000	0.0	0.0	90.0
30	29.160	34.380	10.000	0.0	0.0	90.0
31	29.160	40.630	10.000	0.0	0.0	90.0
32	29.160	46.880	10.000	0.0	0.0	90.0
33	37.490	3.130	10.000	0.0	0.0	90.0
34	37.490	9.380	10.000	0.0	0.0	90.0
35	37.490	15.630	10.000	0.0	0.0	90.0
36	37.490	21.880	10.000	0.0	0.0	90.0
37	37.490	28.130	10.000	0.0	0.0	90.0
38	37.490	34.380	10.000	0.0	0.0	90.0
39	37.490	40.630	10.000	0.0	0.0	90.0
40	37.490	46.880	10.000	0.0	0.0	90.0
41	45.820	3.130	10.000	0.0	0.0	90.0
42	45.820	9.380	10.000	0.0	0.0	90.0
43	45.820	15.630	10.000	0.0	0.0	90.0
44	45.820	21.880	10.000	0.0	0.0	90.0
45	45.820	28.130	10.000	0.0	0.0	90.0
46	45.820	34.380	10.000	0.0	0.0	90.0
47	45.820	40.630	10.000	0.0	0.0	90.0
48	45.820	46.880	10.000	0.0	0.0	90.0

Operator
Telephone
Fax
e-Mail

Room 1 / 3D Rendering



Operator
Telephone
Fax
e-Mail

Room 1 / False Color Rendering

