

Operator
Telephone
Fax
e-Mail

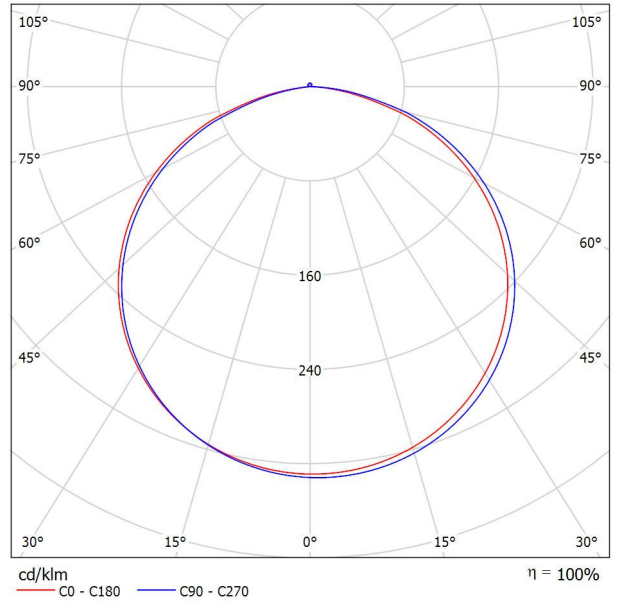
Coydon Lighting UFO LED High Bay light / Luminaire Data Sheet

See our luminaire catalog for an image of the luminaire.



Luminaire classification according to CIE: 99
CIE flux code: 46 79 96 99 100

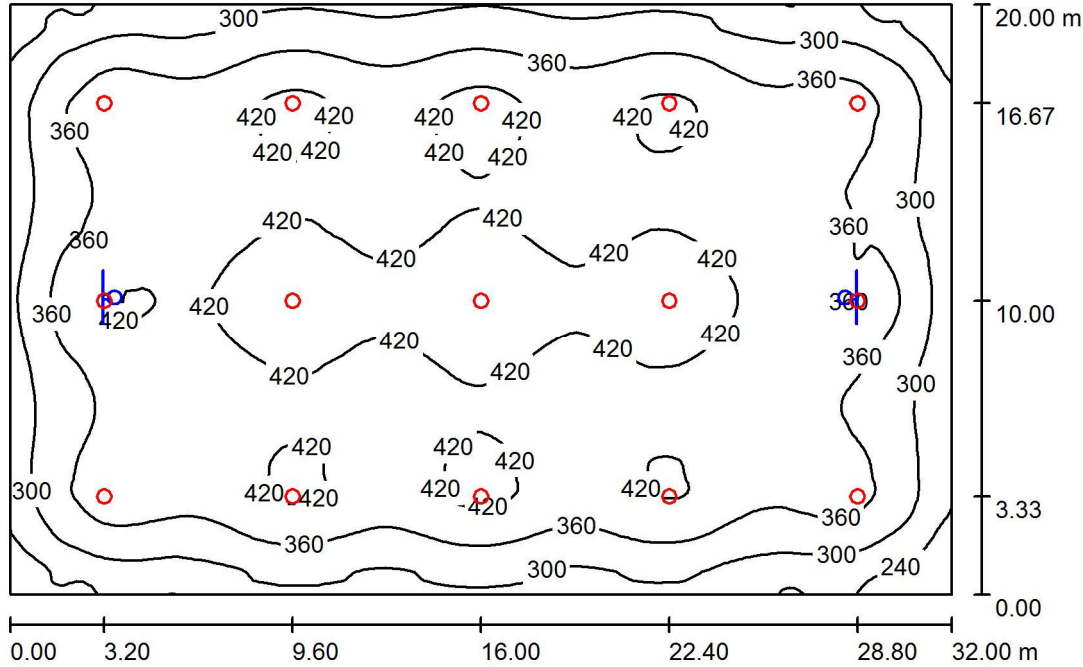
Luminous emittance 1:



Due to missing symmetry properties, no UGR table can be displayed for this luminaire.

Operator
Telephone
Fax
e-Mail

Room 1 / Summary



Height of Room: 6.000 m, Mounting Height: 6.000 m, Light loss factor: 0.80

Values in Lux, Scale 1:257

Surface	ρ [%]	E_{av} [lx]	E_{min} [lx]	E_{max} [lx]	u_0
Workplane	/	370	182	476	0.492
Floor	20	354	190	440	0.537
Ceiling	70	80	64	93	0.805
Walls (4)	50	201	66	310	/

Workplane:

Height: 0.850 m
Grid: 128 x 128 Points
Boundary Zone: 0.000 m

Luminaire Parts List

No.	Pieces	Designation (Correction Factor)	Φ (Luminaire) [lm]	Φ (Lamps) [lm]	P [W]
1	15	Coydon Lighting UFO LED High Bay light (Type 1)* (1.000)	22039	22040	146.0

*Modified Technical Specifications

Total: 330588 Total: 330600 2190.0

Specific connected load: $3.42 \text{ W/m}^2 = 0.92 \text{ W/m}^2/100 \text{ lx}$ (Ground area: 640.00 m^2)

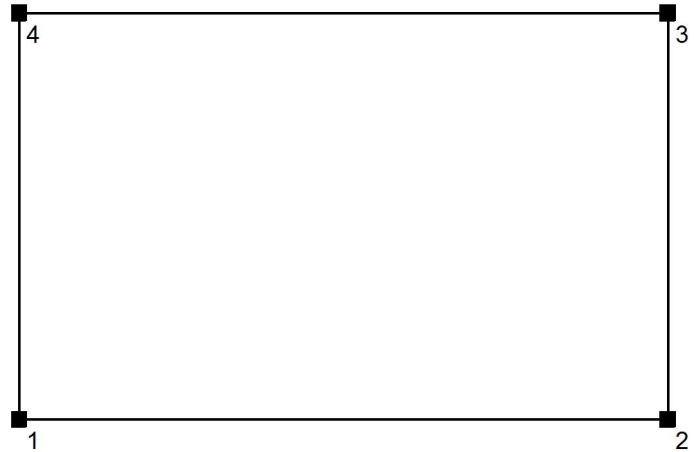
Operator
Telephone
Fax
e-Mail

Room 1 / Input Protocol

Height of working plane: 0.850 m
Boundary Zone: 0.000 m

Light loss factor: 0.80

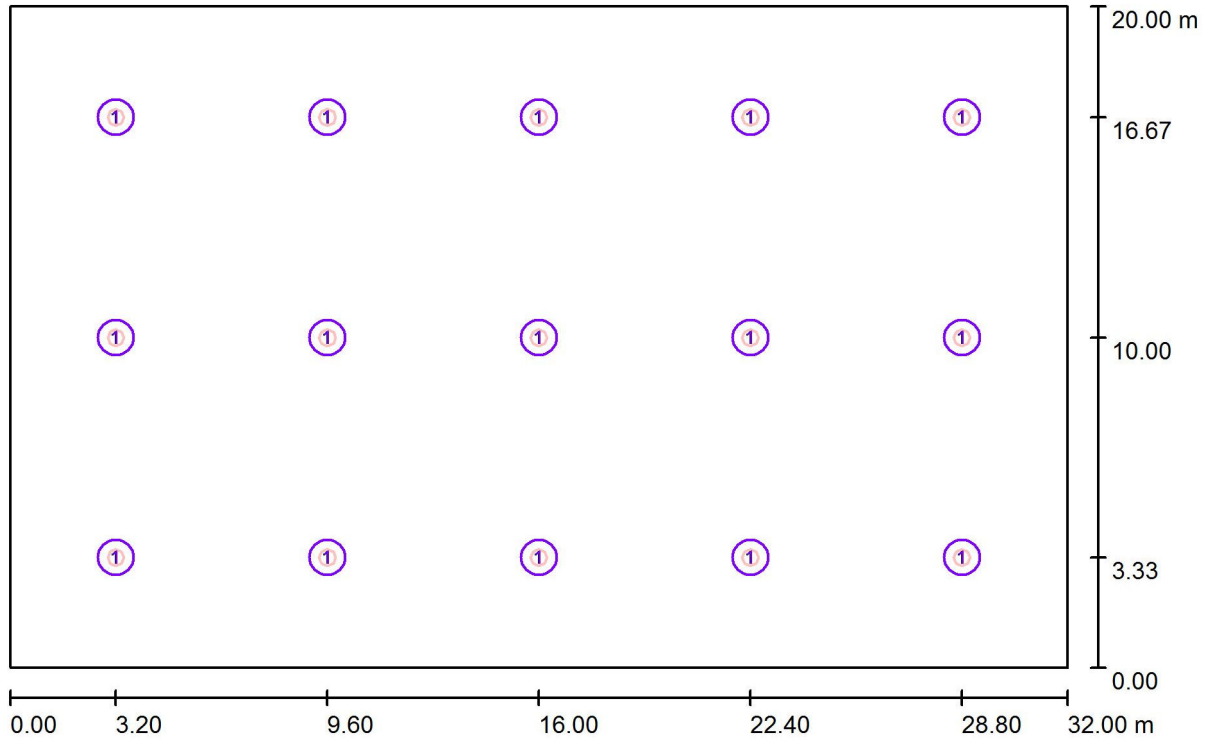
Height of Room: 6.000 m
Ground area: 640.00 m²



Surface	Rho [%]	from ([m] [m])	towards ([m] [m])	Length [m]
Floor	20	/	/	/
Ceiling	70	/	/	/
Wall 1	50	(0.000 0.000)	(32.000 0.000)	32.000
Wall 2	50	(32.000 0.000)	(32.000 20.000)	20.000
Wall 3	50	(32.000 20.000)	(0.000 20.000)	32.000
Wall 4	50	(0.000 20.000)	(0.000 0.000)	20.000

Operator
 Telephone
 Fax
 e-Mail

Room 1 / Luminaires (layout plan)



Scale 1 : 229

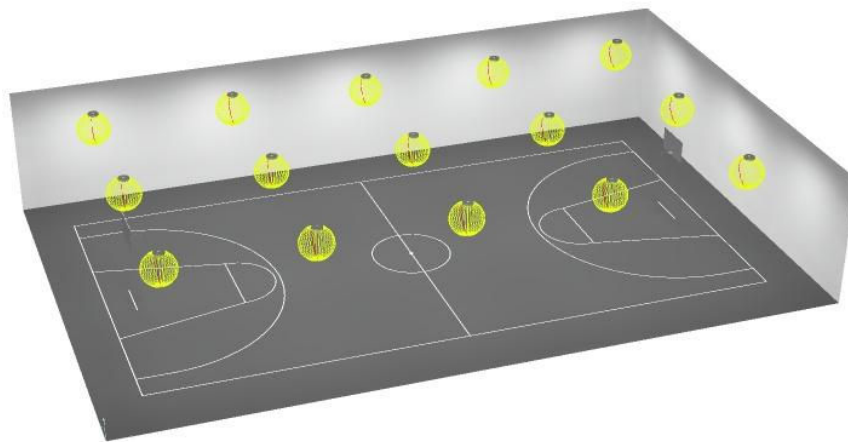
Luminaire Parts List

No.	Pieces	Designation
1	15	Coydon Lighting UFO LED High Bay light (Type 1)*

*Modified Technical Specifications

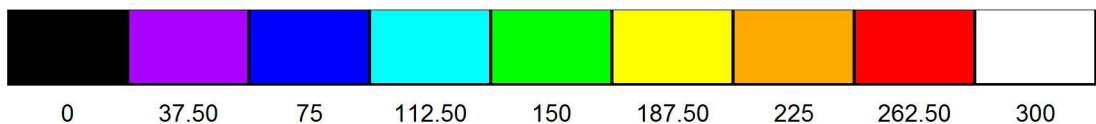
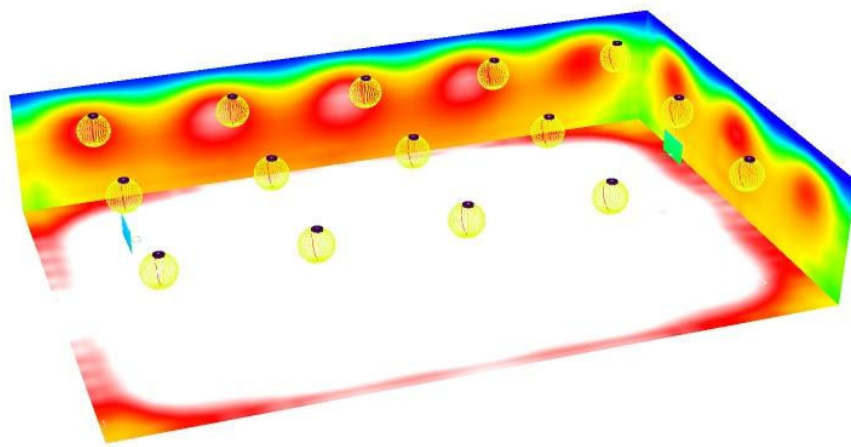
Operator
Telephone
Fax
e-Mail

Room 1 / 3D Rendering



Operator
Telephone
Fax
e-Mail

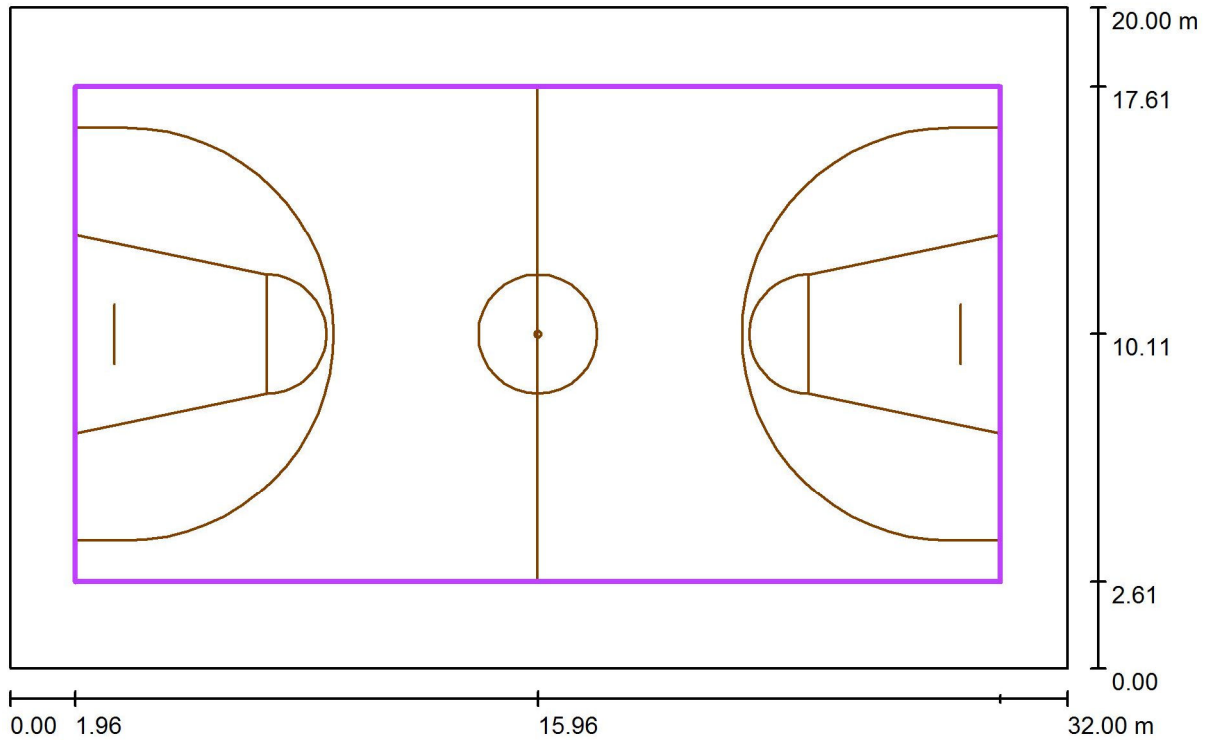
Room 1 / False Color Rendering



lx

Operator
 Telephone
 Fax
 e-Mail

Room 1 / Calculation Grid 1 / Summary



Scale 1 : 229

Position: (15.965 m, 10.112 m, 0.000 m)
 Size: (28.003 m, 14.996 m)
 Rotation: (0.0°, 0.0°, 0.0°)
 Type: Normal, Grid: 13 x 7 Points
 Belongs to the following sport arena: Basketball 1

Results overview

No.	Type	E_{av} [lx]	E_{min} [lx]	E_{max} [lx]	u0	E_{min} / E_{max}	$E_{h\ m} / E_m$	H [m]	Camera
1	perpendicular	384	315	439	0.82	0.72	/	0.000	/

$E_{h\ m} / E_m$ = Relationship between middle horizontal and vertical illuminance, H = Measuring Height