

Operator  
 Telephone  
 Fax  
 e-Mail

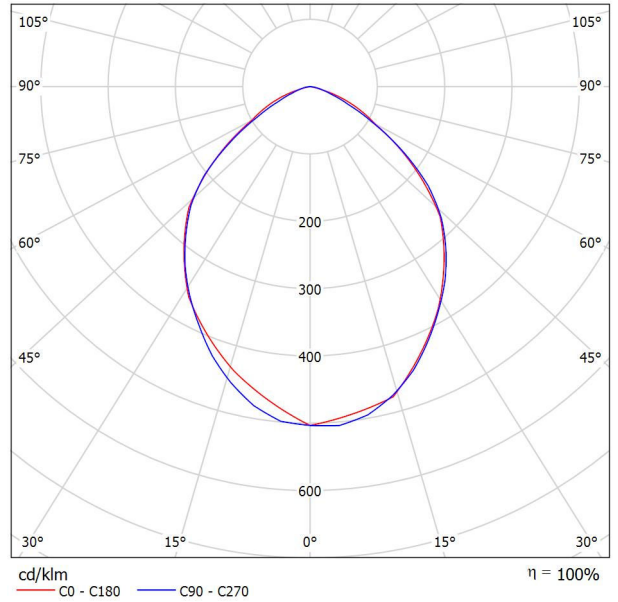
**Coydon Lighting KD-FLN-W150 150W LED Flood Light / Luminaire Data Sheet**

See our luminaire catalog for an image of the luminaire.



Luminaire classification according to CIE: 100  
 CIE flux code: 60 91 99 100 100

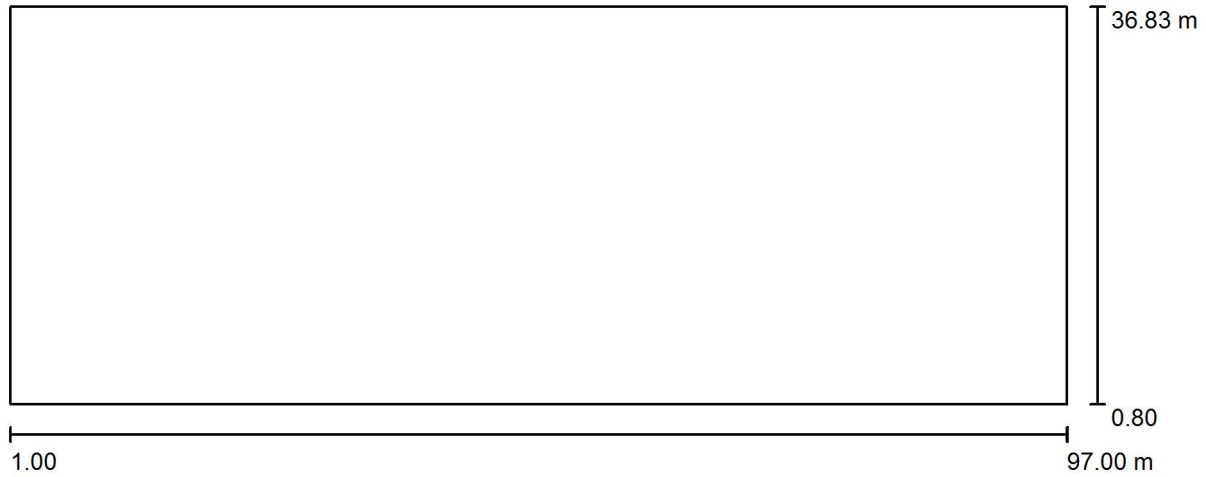
Luminous emittance 1:



Due to missing symmetry properties, no UGR table can be displayed for this luminaire.

Operator  
Telephone  
Fax  
e-Mail

## 户外场景 1 / Planning data



Light loss factor: 0.80, ULR (Upward Light Ratio): 1.5%

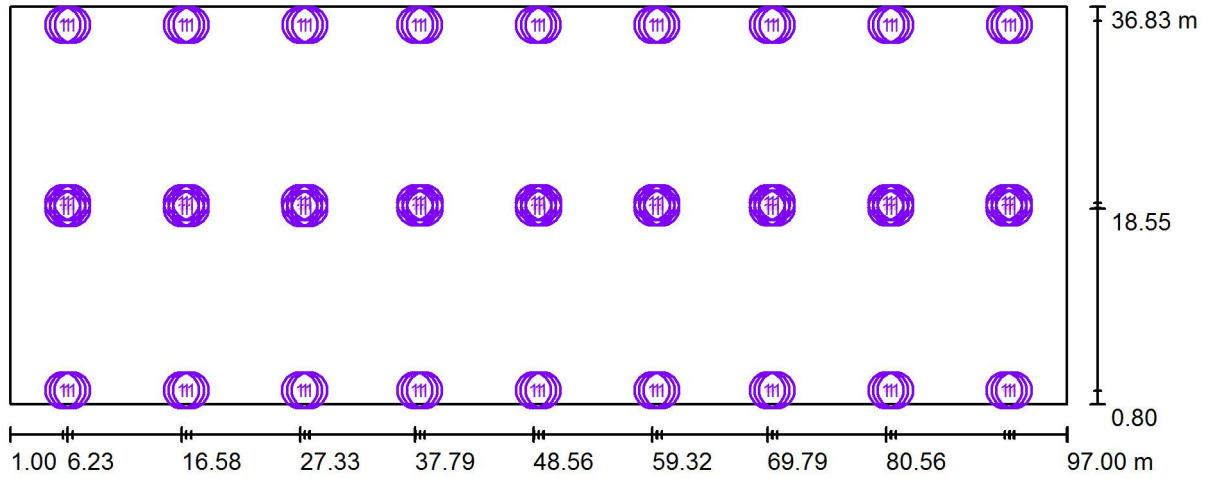
Scale 1:687

### Luminaire Parts List

No.	Pieces	Designation (Correction Factor)	$\Phi$ (Luminaire) [lm]	$\Phi$ (Lamps) [lm]	P [W]
1	108	Coydon Lighting KD-FLN-W150 150W LED Flood Light (1.000)	22639	22635	150.2
Total:			2444992	Total: 2444580	16221.6

Operator  
 Telephone  
 Fax  
 e-Mail

户外场景 1 / Luminaires (layout plan)



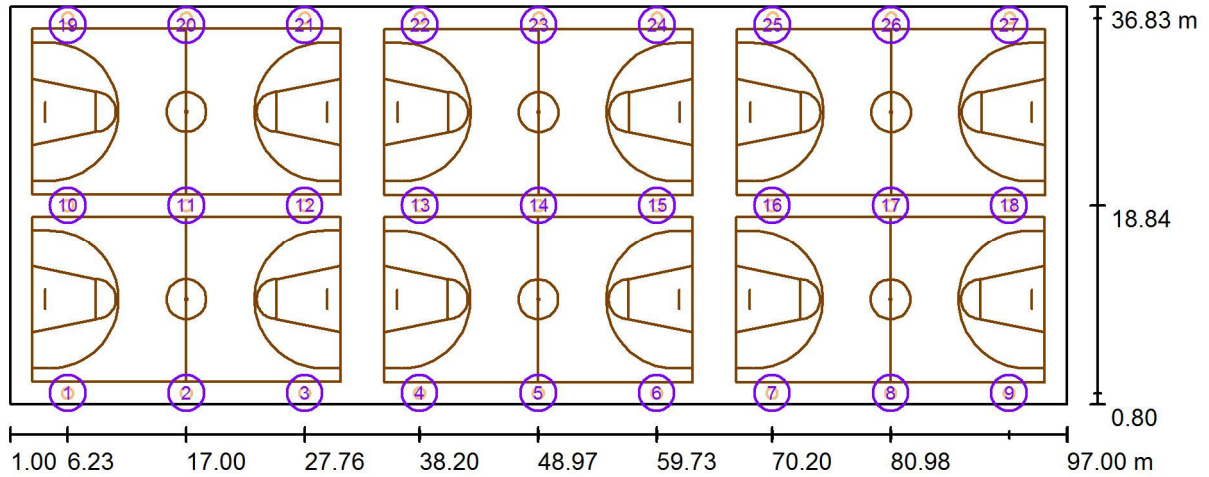
Scale 1 : 687

Luminaire Parts List

No.	Pieces	Designation
1	108	Coydon Lighting KD-FLN-W150 150W LED Flood Light

Operator  
Telephone  
Fax  
e-Mail

户外场景 1 / Pole Positions (Coordinates List)



Scale 1 : 687

List of the Pole Positions

No.	Designation	Position [m]		
		X	Y	Z
1	(x)Pole Position	6.230	1.800	0.000
2	(x)Pole Position	17.006	1.800	0.000
3	(x)Pole Position	27.764	1.800	0.000
4	(x)Pole Position	38.197	1.800	0.000

Operator  
Telephone  
Fax  
e-Mail

## 户外场景 1 / Pole Positions (Coordinates List)

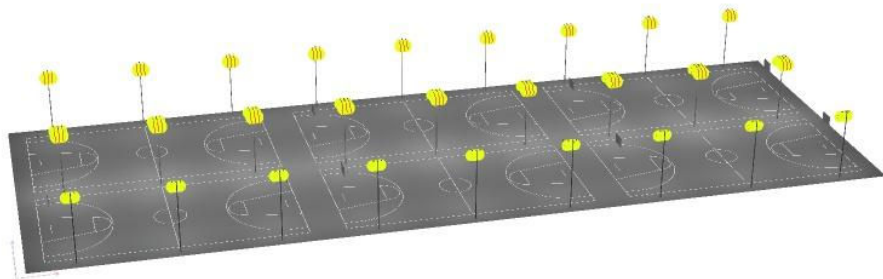
### List of the Pole Positions

No.	Designation	Position [m]		
		X	Y	Z
5	(x)Pole Position	48.973	1.800	0.000
6	(x)Pole Position	59.731	1.800	0.000
7	(x)Pole Position	70.202	1.800	0.000
8	(x)Pole Position	80.978	1.800	0.000
9	(x)Pole Position	91.736	1.800	0.000
10	(z)Pole Position	6.235	18.840	0.000
11	(z)Pole Position	17.011	18.840	0.000
12	(z)Pole Position	27.768	18.840	0.000
13	(z)Pole Position	38.231	18.840	0.000
14	(z)Pole Position	49.008	18.840	0.000
15	(z)Pole Position	59.765	18.840	0.000
16	(z)Pole Position	70.201	18.840	0.000
17	(z)Pole Position	80.977	18.840	0.000
18	(z)Pole Position	91.735	18.840	0.000
19	(s)Pole Position	6.235	35.813	0.000
20	(s)Pole Position	17.002	35.813	0.000
21	(s)Pole Position	27.768	35.813	0.000
22	(s)Pole Position	38.233	35.813	0.000
23	(s)Pole Position	49.000	35.813	0.000
24	(s)Pole Position	59.767	35.813	0.000
25	(s)Pole Position	70.247	35.813	0.000
26	(s)Pole Position	81.014	35.813	0.000
27	(s)Pole Position	91.781	35.813	0.000

Operator  
Telephone  
Fax  
e-Mail

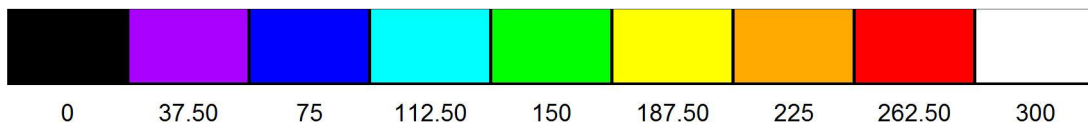
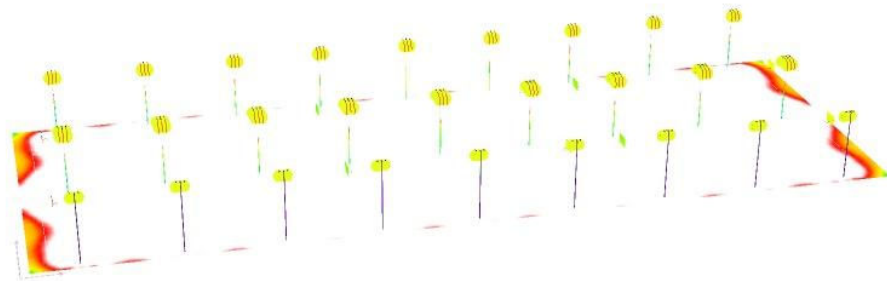
## 户外场景 1 / 3D Rendering

---



Operator  
Telephone  
Fax  
e-Mail

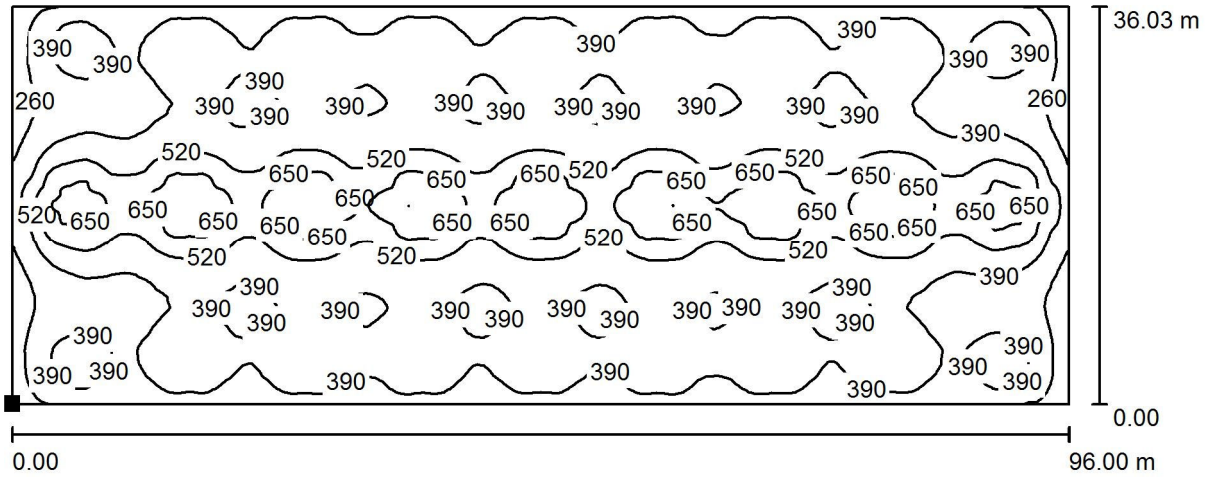
## 户外场景 1 / False Color Rendering



lx

Operator  
Telephone  
Fax  
e-Mail

户外场景 1 / 地面组件 1 / 表面 1 / Isolines (E)



Values in Lux, Scale 1 : 687

Position of surface in external scene:

Marked point:

(1.000 m, 0.800 m, 0.000 m)



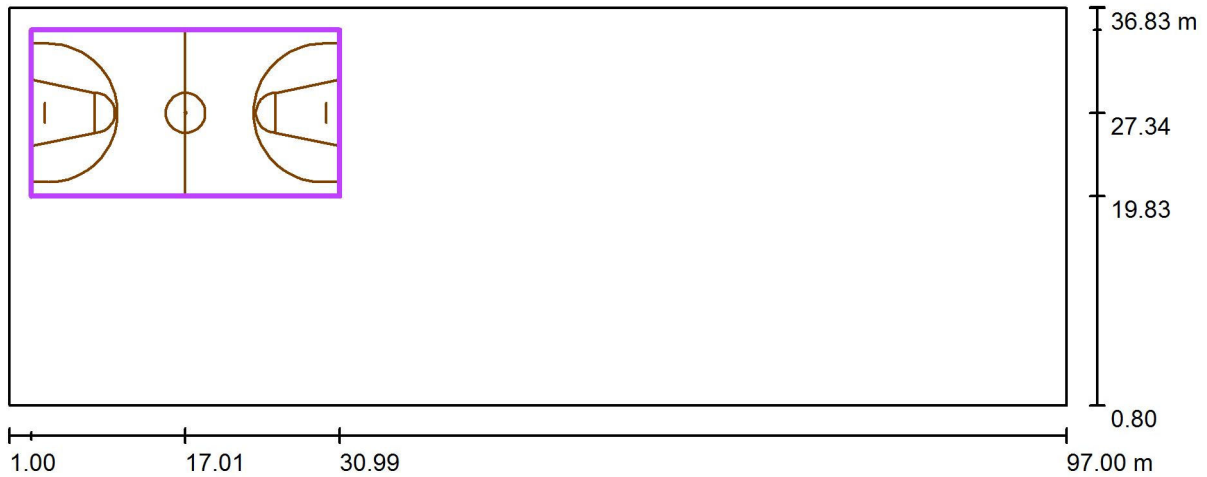
Grid: 128 x 128 Points

$E_{av}$ [lx]	$E_{min}$ [lx]	$E_{max}$ [lx]	u0	$E_{min} / E_{max}$
451	165	802	0.365	0.205



Operator  
Telephone  
Fax  
e-Mail

户外场景 1 / Calculation Grid 2 / Summary



Scale 1 : 687

Position: (17.006 m, 27.342 m, 0.000 m)  
 Size: (27.966 m, 15.031 m)  
 Rotation: (0.0°, 0.0°, 0.0°)  
 Type: Normal, Grid: 13 x 7 Points  
 Belongs to the following sport arena: Basketball 2

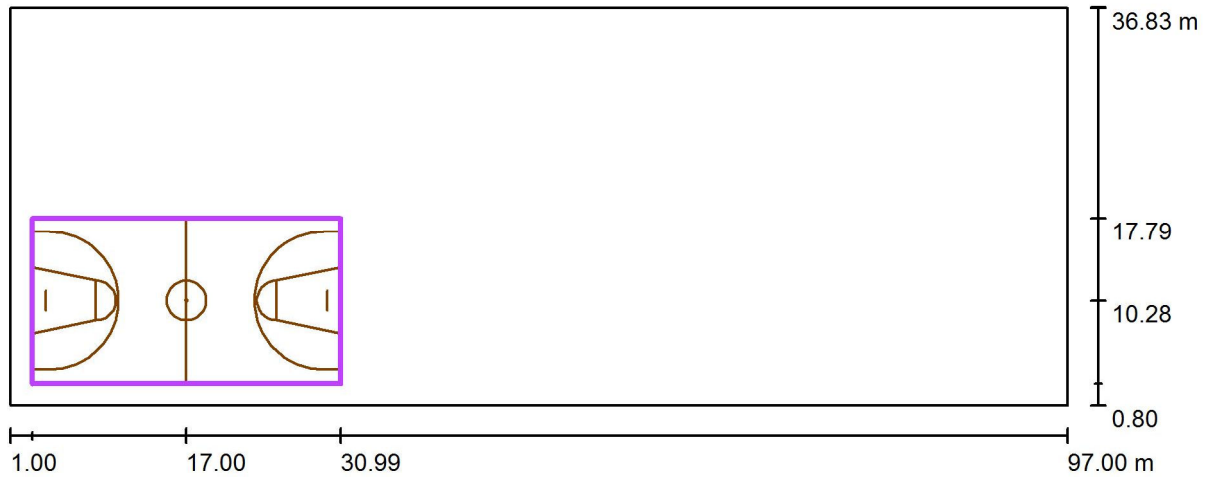
Results overview

No.	Type	$E_{av}$ [lx]	$E_{min}$ [lx]	$E_{max}$ [lx]	u0	$E_{min} / E_{max}$	$E_{h\ m} / E_m$	H [m]	Camera
1	perpendicular	451	294	675	0.65	0.44	/	0.000	/

$E_{h\ m} / E_m$  = Relationship between middle horizontal and vertical illuminance, H = Measuring Height

Operator  
Telephone  
Fax  
e-Mail

户外场景 1 / Calculation Grid 1 / Summary



Scale 1 : 687

Position: (16.995 m, 10.283 m, 0.000 m)  
 Size: (27.997 m, 15.017 m)  
 Rotation: (0.0°, 0.0°, 0.0°)  
 Type: Normal, Grid: 13 x 7 Points  
 Belongs to the following sport arena: Basketball 1

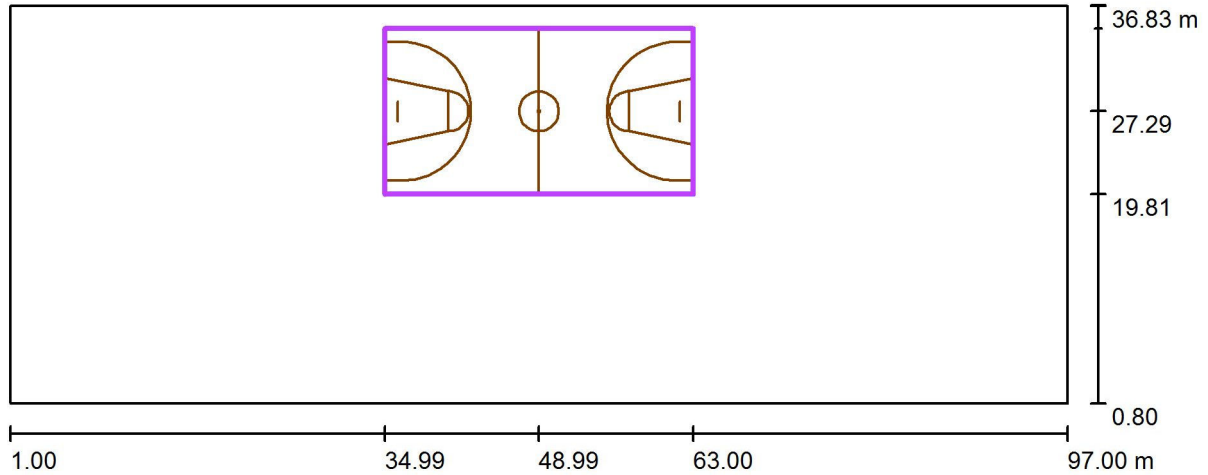
Results overview

No.	Type	$E_{av}$ [lx]	$E_{min}$ [lx]	$E_{max}$ [lx]	u0	$E_{min} / E_{max}$	$E_{h\ m} / E_m$	H [m]	Camera
1	perpendicular	451	293	696	0.65	0.42	/	0.000	/

$E_{h\ m} / E_m$  = Relationship between middle horizontal and vertical illuminance, H = Measuring Height

Operator  
Telephone  
Fax  
e-Mail

户外场景 1 / Calculation Grid 3 / Summary



Scale 1 : 687

Position: (48.994 m, 27.292 m, 0.000 m)  
 Size: (28.012 m, 14.971 m)  
 Rotation: (0.0°, 0.0°, 0.0°)  
 Type: Normal, Grid: 13 x 7 Points  
 Belongs to the following sport arena: Basketball 3

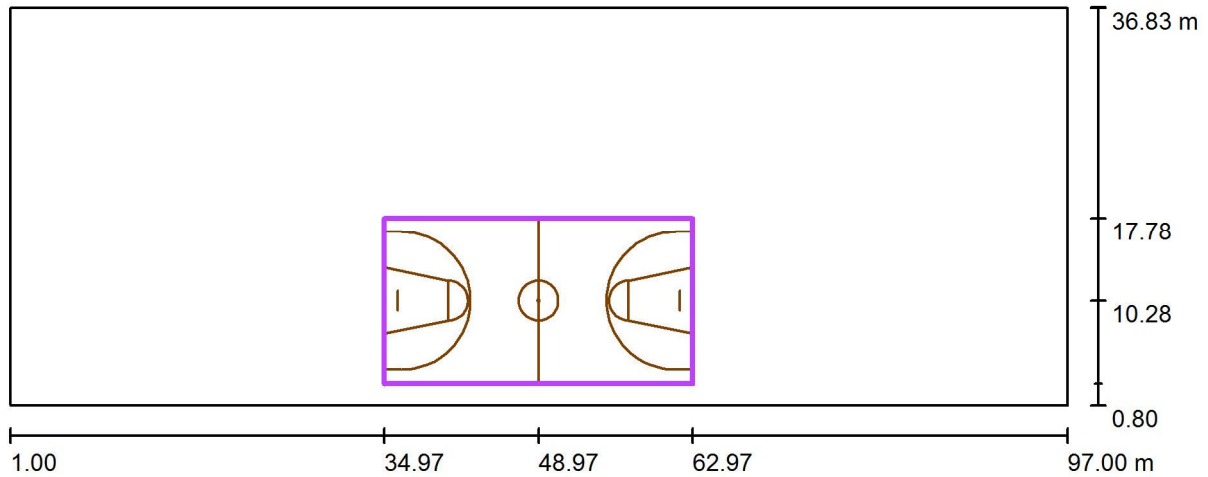
Results overview

No.	Type	$E_{av}$ [lx]	$E_{min}$ [lx]	$E_{max}$ [lx]	u0	$E_{min} / E_{max}$	$E_{h\ m} / E_m$	H [m]	Camera
1	perpendicular	476	380	690	0.80	0.55	/	0.000	/

$E_{h\ m} / E_m$  = Relationship between middle horizontal and vertical illuminance, H = Measuring Height

Operator  
Telephone  
Fax  
e-Mail

户外场景 1 / Calculation Grid 4 / Summary



Scale 1 : 687

Position: (48.970 m, 10.282 m, 0.000 m)  
 Size: (28.004 m, 15.003 m)  
 Rotation: (0.0°, 0.0°, 0.0°)  
 Type: Normal, Grid: 13 x 7 Points  
 Belongs to the following sport arena: Basketball 4

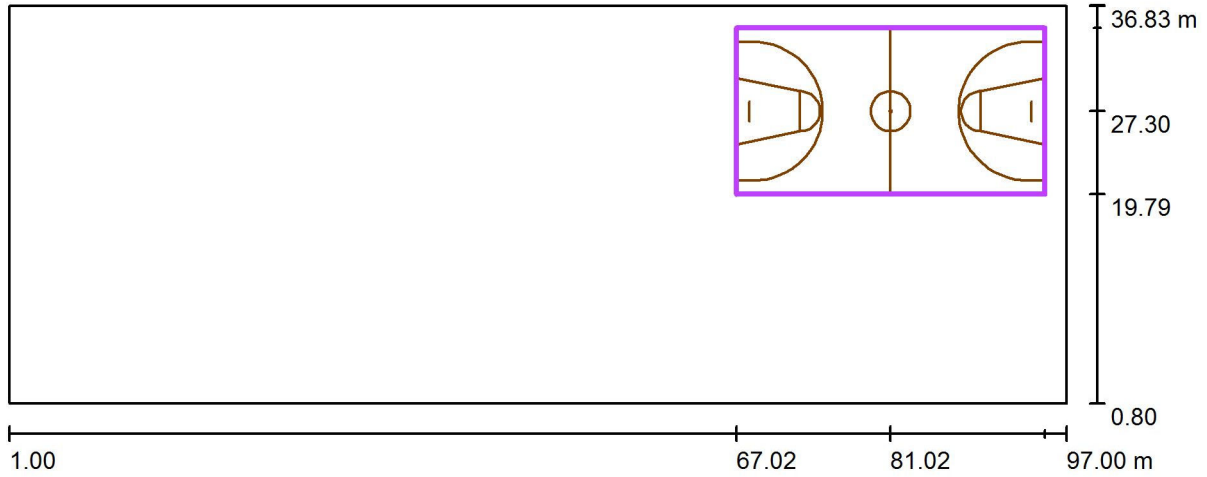
Results overview

No.	Type	$E_{av}$ [lx]	$E_{min}$ [lx]	$E_{max}$ [lx]	u0	$E_{min} / E_{max}$	$E_{h\ m} / E_m$	H [m]	Camera
1	perpendicular	473	377	694	0.80	0.54	/	0.000	/

$E_{h\ m} / E_m$  = Relationship between middle horizontal and vertical illuminance, H = Measuring Height

Operator  
 Telephone  
 Fax  
 e-Mail

户外场景 1 / Calculation Grid 5 / Summary



Scale 1 : 687

Position: (81.017 m, 27.295 m, 0.000 m)  
 Size: (27.989 m, 15.010 m)  
 Rotation: (0.0°, 0.0°, 0.0°)  
 Type: Normal, Grid: 13 x 7 Points  
 Belongs to the following sport arena: Basketball 5

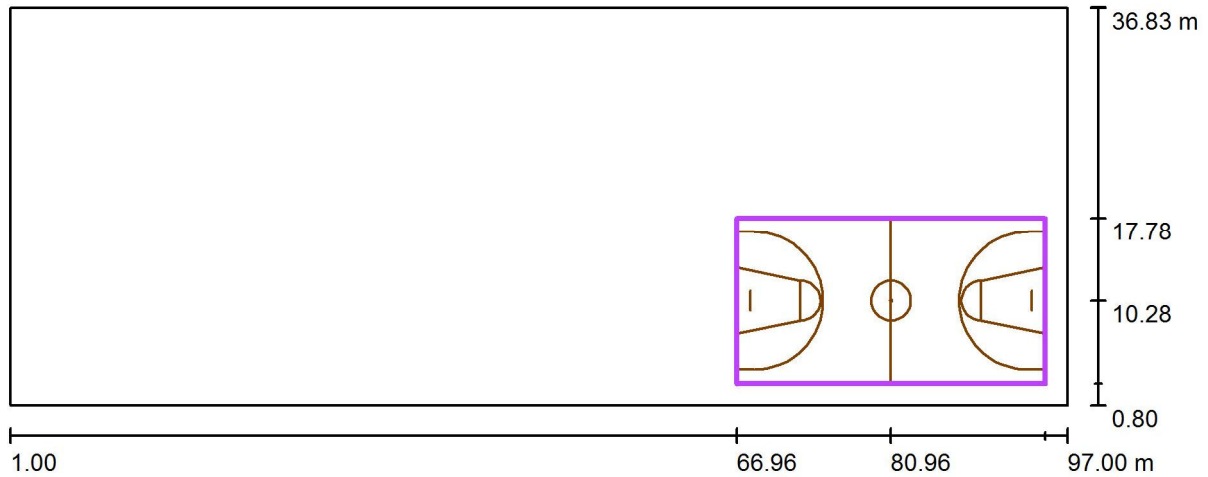
Results overview

No.	Type	$E_{av}$ [lx]	$E_{min}$ [lx]	$E_{max}$ [lx]	u0	$E_{min} / E_{max}$	$E_{h\ m} / E_m$	H [m]	Camera
1	perpendicular	453	294	700	0.65	0.42	/	0.000	/

$E_{h\ m} / E_m$  = Relationship between middle horizontal and vertical illuminance, H = Measuring Height

Operator  
Telephone  
Fax  
e-Mail

户外场景 1 / Calculation Grid 6 / Summary



Scale 1 : 687

Position: (80.962 m, 10.280 m, 0.000 m)  
 Size: (27.995 m, 14.992 m)  
 Rotation: (0.0°, 0.0°, 0.0°)  
 Type: Normal, Grid: 13 x 7 Points  
 Belongs to the following sport arena: Basketball 6

Results overview

No.	Type	$E_{av}$ [lx]	$E_{min}$ [lx]	$E_{max}$ [lx]	u0	$E_{min} / E_{max}$	$E_{h\ m} / E_m$	H [m]	Camera
1	perpendicular	450	293	688	0.65	0.42	/	0.000	/

$E_{h\ m} / E_m$  = Relationship between middle horizontal and vertical illuminance, H = Measuring Height