

Operator  
Telephone  
Fax  
e-Mail

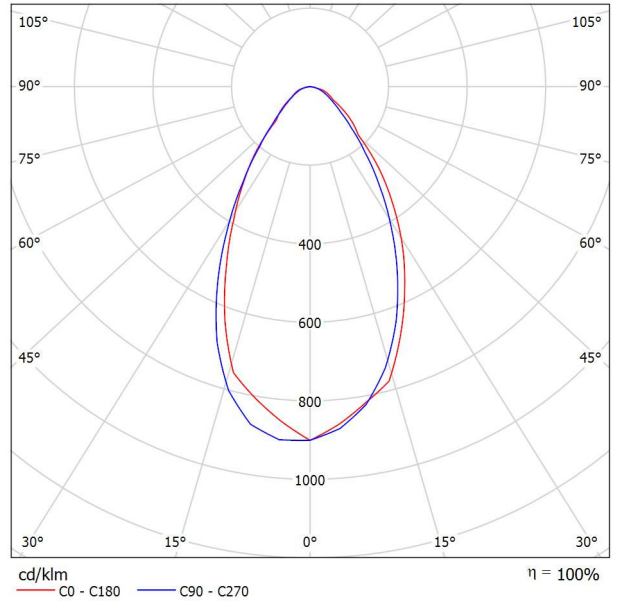
### Coydon Lighting KD-FLN-W150 60D / Luminaire Data Sheet

See our luminaire catalog for an image of the luminaire.



Luminaire classification according to CIE: 100  
CIE flux code: 75 92 99 100 100

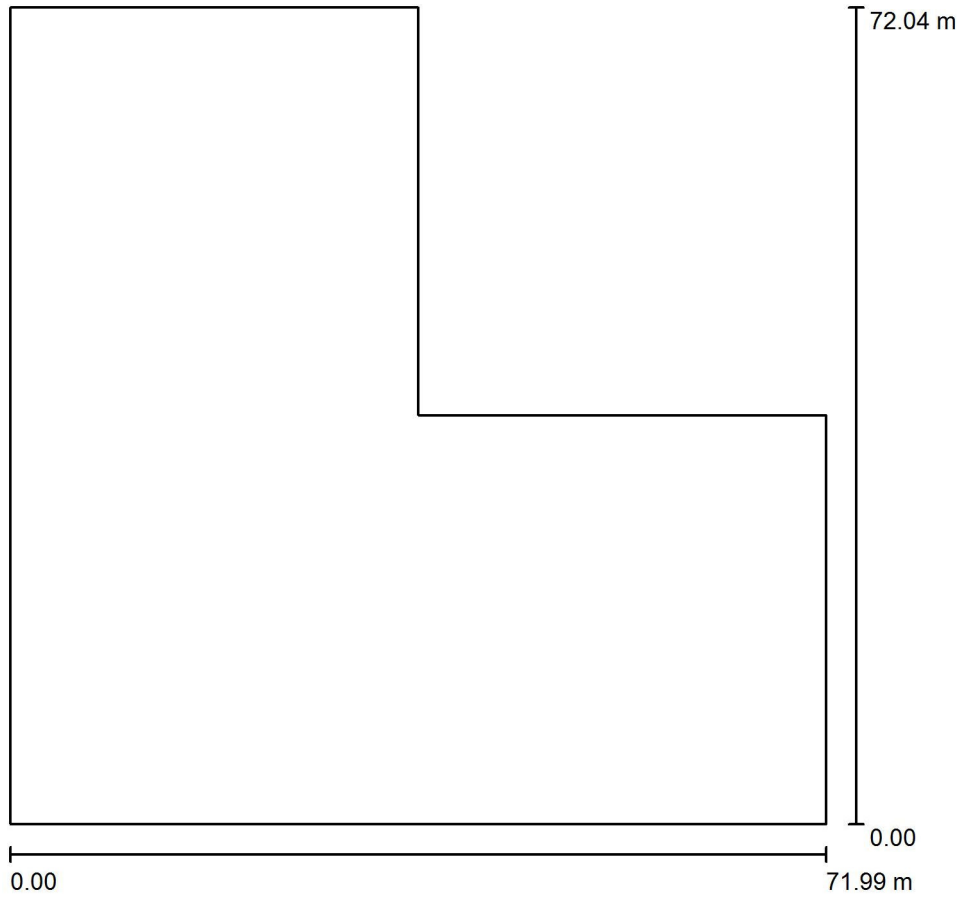
Luminous emittance 1:



Due to missing symmetry properties, no UGR table can be displayed for this luminaire.

Operator  
 Telephone  
 Fax  
 e-Mail

Exterior Scene 1 / Planning data



Light loss factor: 0.80, ULR (Upward Light Ratio): 15.0%

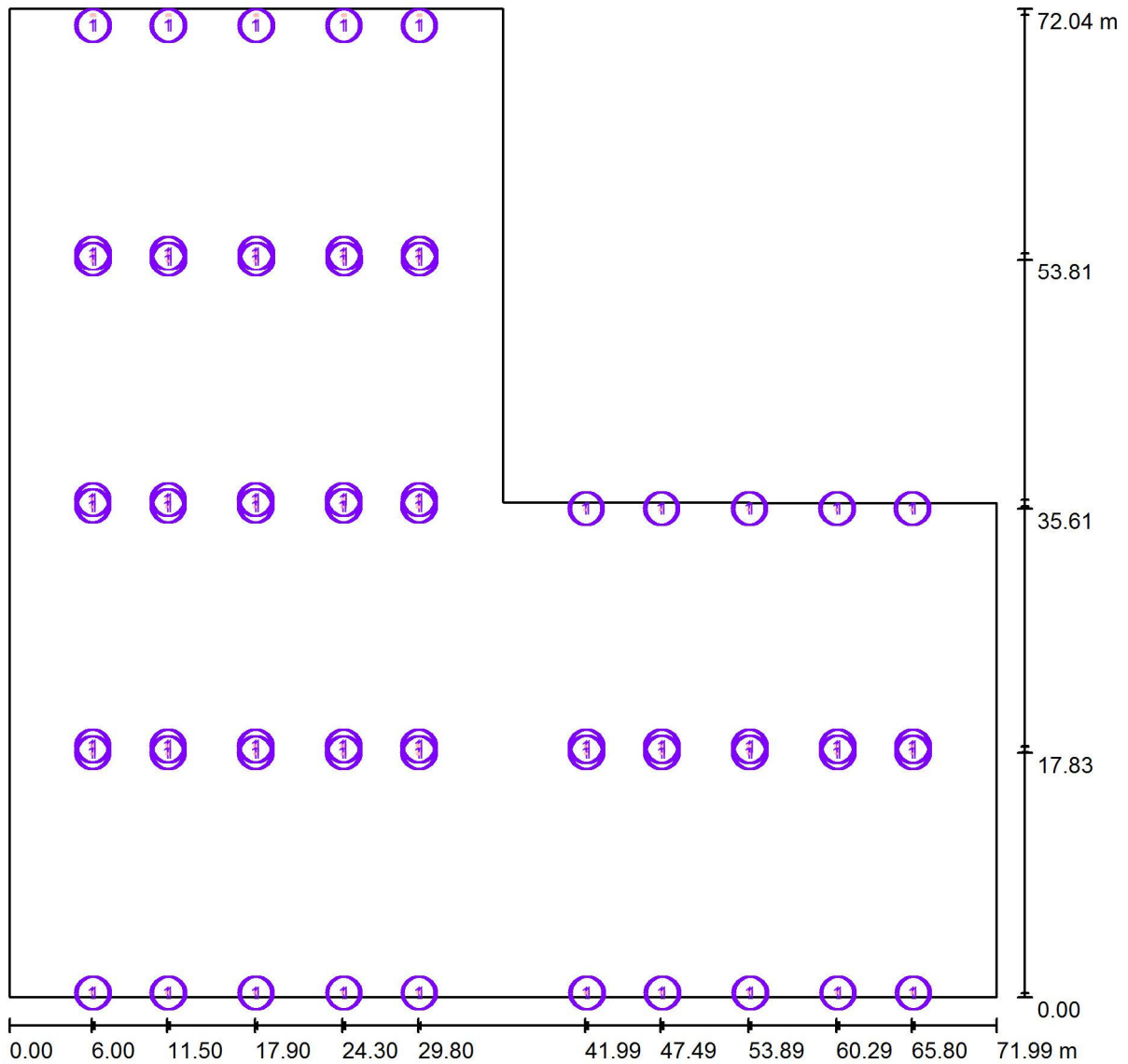
Scale 1:668

**Luminaire Parts List**

No.	Pieces	Designation (Correction Factor)	Φ (Luminaire) [lm]	Φ (Lamps) [lm]	P [W]
1	120	Coydon Lighting KD-FLN-W150 60D (1.000)	19829	19842	154.4
Total:			2379499	Total: 2381040	18528.0

Operator  
 Telephone  
 Fax  
 e-Mail

Exterior Scene 1 / Luminaires (layout plan)



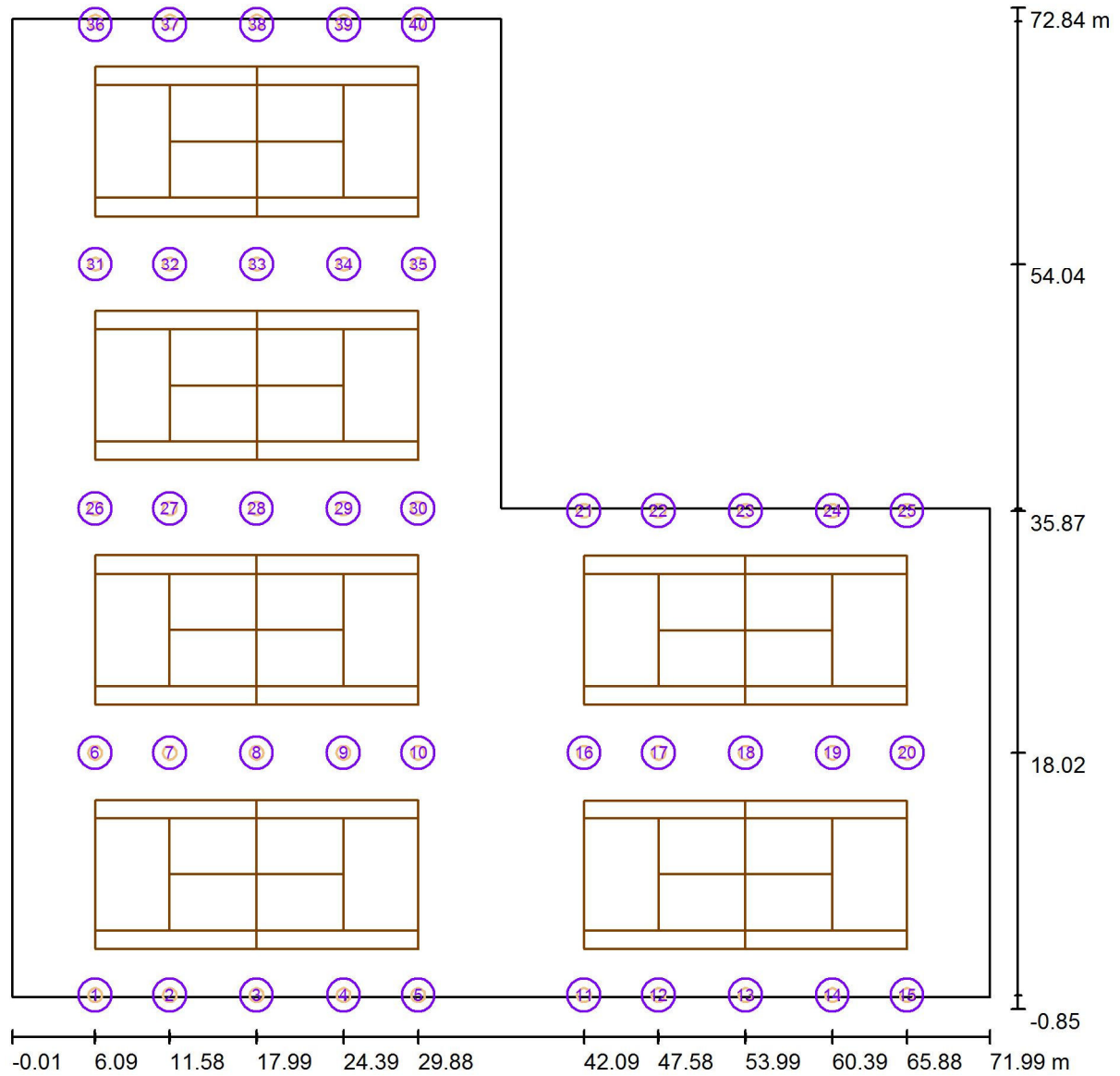
Scale 1 : 515

Luminaire Parts List

No.	Pieces	Designation
1	120	Coydon Lighting KD-FLN-W150 60D

Operator  
Telephone  
Fax  
e-Mail

Exterior Scene 1 / Pole Positions (Coordinates List)



Scale 1 : 515

List of the Pole Positions

No.	Designation	Position [m]		
		X	Y	Z
1	(x) Pole Position	6.102	0.146	0.000
2	(x) Pole Position	11.589	0.146	0.000
3	(x) Pole Position	17.993	0.146	0.000
4	(x) Pole Position	24.396	0.146	0.000

Operator  
Telephone  
Fax  
e-Mail

## Exterior Scene 1 / Pole Positions (Coordinates List)

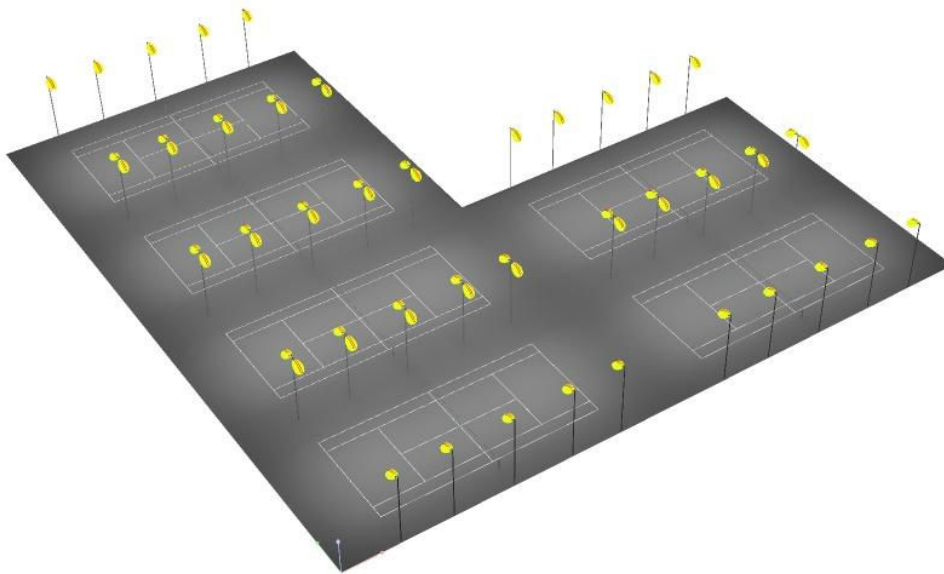
### List of the Pole Positions

No.	Designation	Position [m]		
		X	Y	Z
5	(x) Pole Position	29.890	0.146	0.000
6	(x) Pole Position	6.094	18.025	0.000
7	(x) Pole Position	11.581	18.025	0.000
8	(x) Pole Position	17.988	18.025	0.000
9	(x) Pole Position	24.388	18.025	0.000
10	(x) Pole Position	29.882	18.025	0.000
11	(x) Pole Position	42.095	0.146	0.000
12	(x) Pole Position	47.583	0.146	0.000
13	(x) Pole Position	53.986	0.146	0.000
14	(x) Pole Position	60.390	0.146	0.000
15	(x) Pole Position	65.884	0.146	0.000
16	(x) Pole Position	42.106	18.025	0.000
17	(x) Pole Position	47.593	18.025	0.000
18	(x) Pole Position	54.000	18.025	0.000
19	(x) Pole Position	60.400	18.025	0.000
20	(x) Pole Position	65.895	18.025	0.000
21	(x) Pole Position	42.095	35.869	0.000
22	(x) Pole Position	47.582	35.869	0.000
23	(x) Pole Position	53.989	35.869	0.000
24	(x) Pole Position	60.389	35.869	0.000
25	(x) Pole Position	65.884	35.869	0.000
26	(x) Pole Position	6.096	36.045	0.000
27	(x) Pole Position	11.583	36.045	0.000
28	(x) Pole Position	17.990	36.045	0.000
29	(x) Pole Position	24.390	36.045	0.000
30	(x) Pole Position	29.885	36.045	0.000
31	(x) Pole Position	6.120	54.044	0.000
32	(x) Pole Position	11.608	54.044	0.000
33	(x) Pole Position	18.015	54.044	0.000
34	(x) Pole Position	24.415	54.044	0.000
35	(x) Pole Position	29.909	54.044	0.000
36	(x) Pole Position	6.115	71.836	0.000
37	(x) Pole Position	11.602	71.836	0.000
38	(x) Pole Position	18.009	71.836	0.000
39	(x) Pole Position	24.409	71.836	0.000
40	(x) Pole Position	29.904	71.836	0.000

Operator  
Telephone  
Fax  
e-Mail

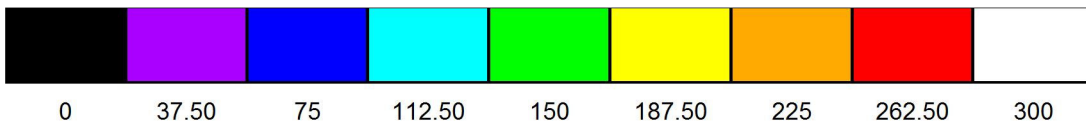
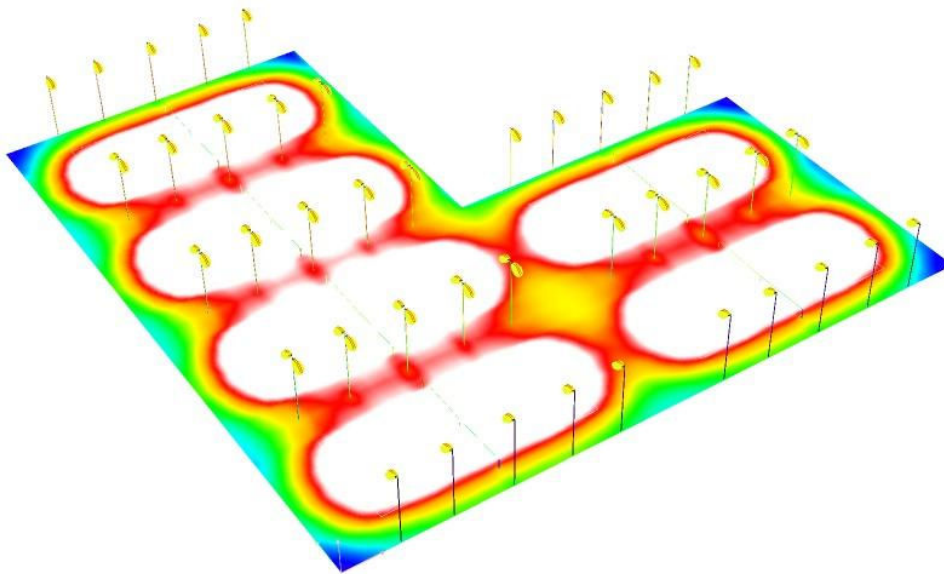
Exterior Scene 1 / 3D Rendering

---



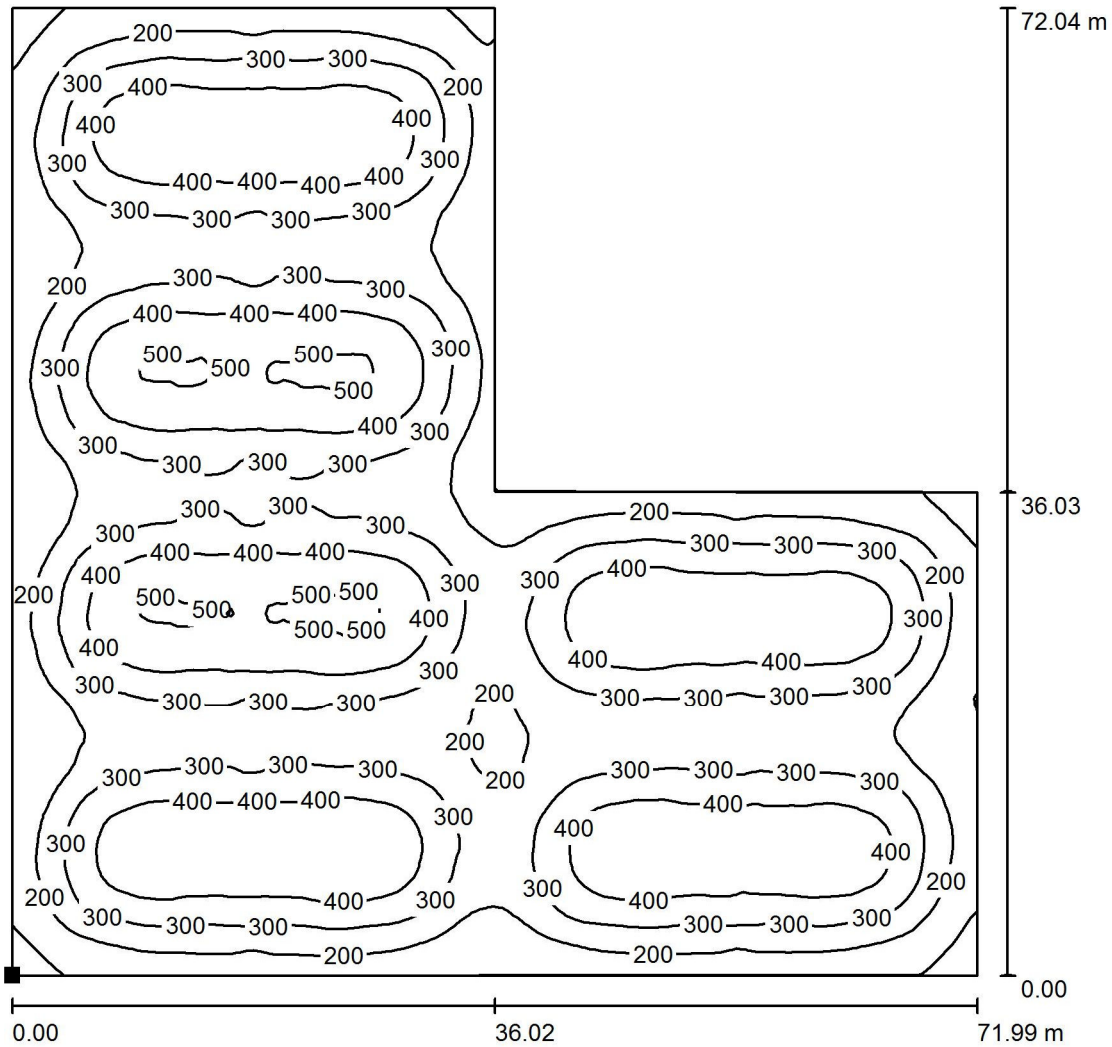
Operator  
Telephone  
Fax  
e-Mail

Exterior Scene 1 / False Color Rendering



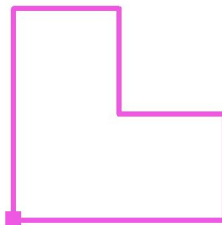
Operator  
 Telephone  
 Fax  
 e-Mail

Exterior Scene 1 / Ground Element 1 / Surface 1 / Isolines (E)



Values in Lux, Scale 1 : 564

Position of surface in external scene:  
 Marked point:  
 (0.000 m, 0.000 m, 0.000 m)



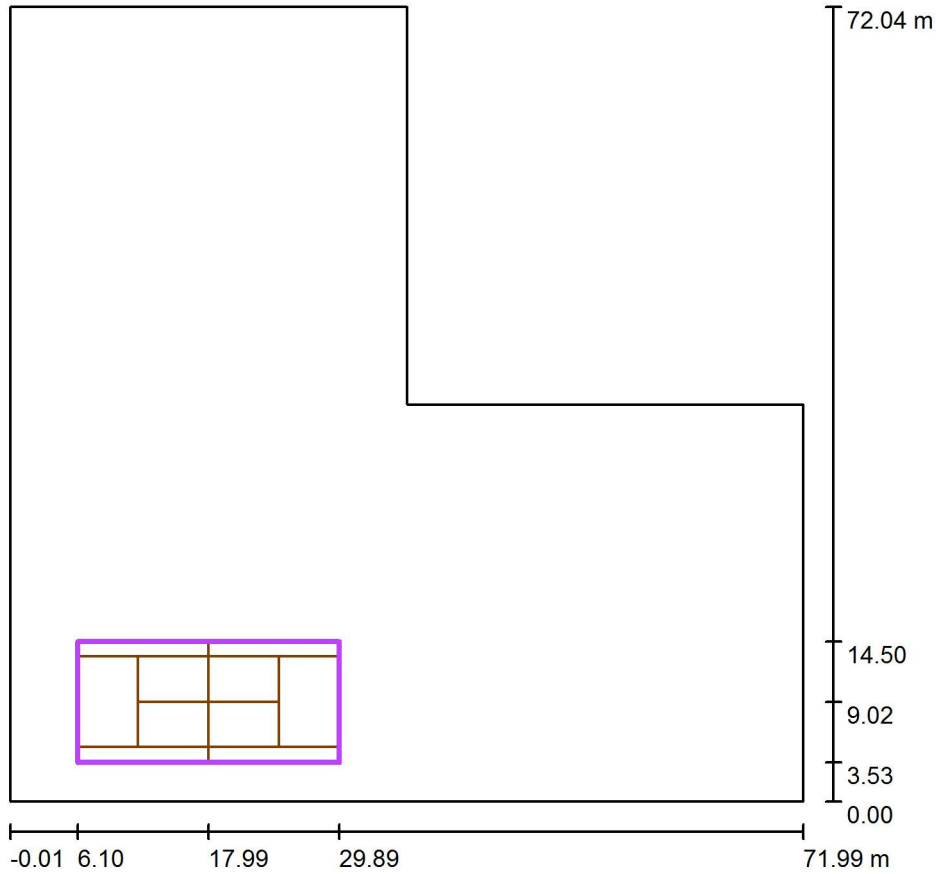
Grid: 128 x 128 Points

$E_{av}$ [lx]	$E_{min}$ [lx]	$E_{max}$ [lx]	u0	$E_{min} / E_{max}$
311	63	517	0.204	0.123



Operator  
 Telephone  
 Fax  
 e-Mail

Exterior Scene 1 / Calculation Grid 1 / Summary



Scale 1 : 687

Position: (17.994 m, 9.016 m, 0.000 m)  
 Size: (23.787 m, 10.968 m)  
 Rotation: (0.0°, 0.0°, 0.0°)  
 Type: Normal, Grid: 13 x 5 Points  
 Belongs to the following sport arena: Tennis 1

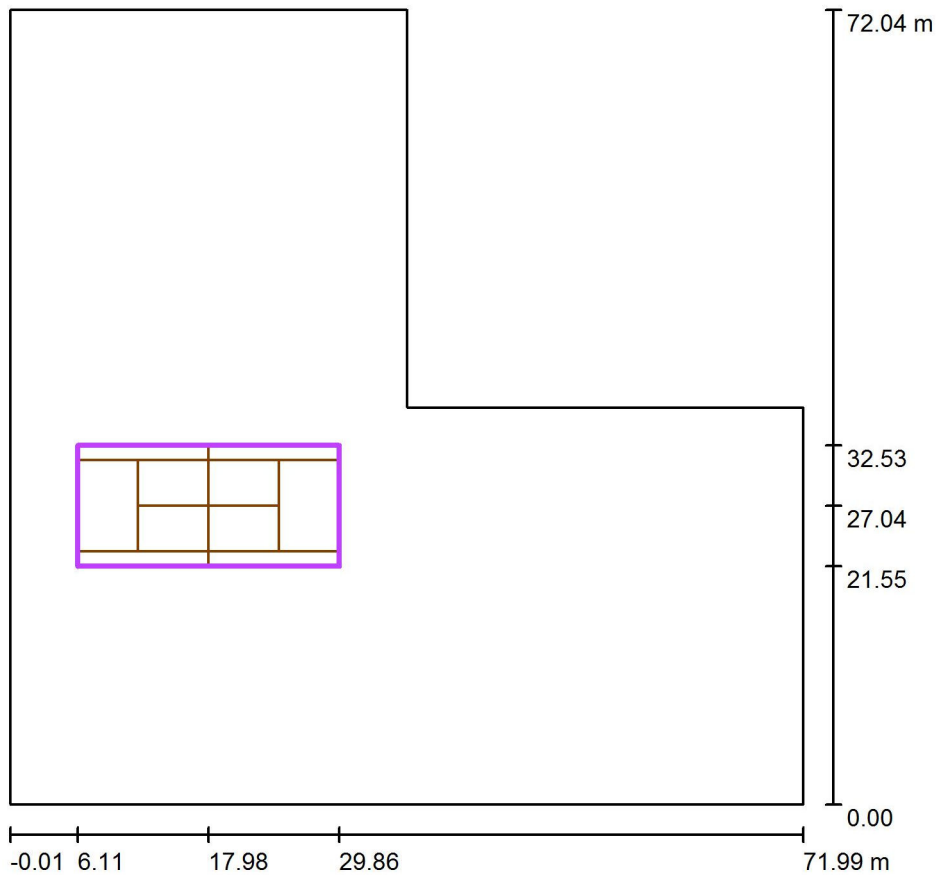
Results overview

No.	Type	$E_{av}$ [lx]	$E_{min}$ [lx]	$E_{max}$ [lx]	u0	$E_{min} / E_{max}$	$E_{h\ m} / E_m$	H [m]	Camera
1	perpendicular	412	316	487	0.77	0.65	/	0.000	/

$E_{h\ m} / E_m$  = Relationship between middle horizontal and vertical illuminance, H = Measuring Height

Operator  
 Telephone  
 Fax  
 e-Mail

Exterior Scene 1 / Calculation Grid 2 / Summary



Scale 1 : 687

Position: (17.985 m, 27.040 m, 0.000 m)  
 Size: (23.742 m, 10.970 m)  
 Rotation: (0.0°, 0.0°, 0.0°)  
 Type: Normal, Grid: 13 x 7 Points  
 Belongs to the following sport arena: Tennis 2

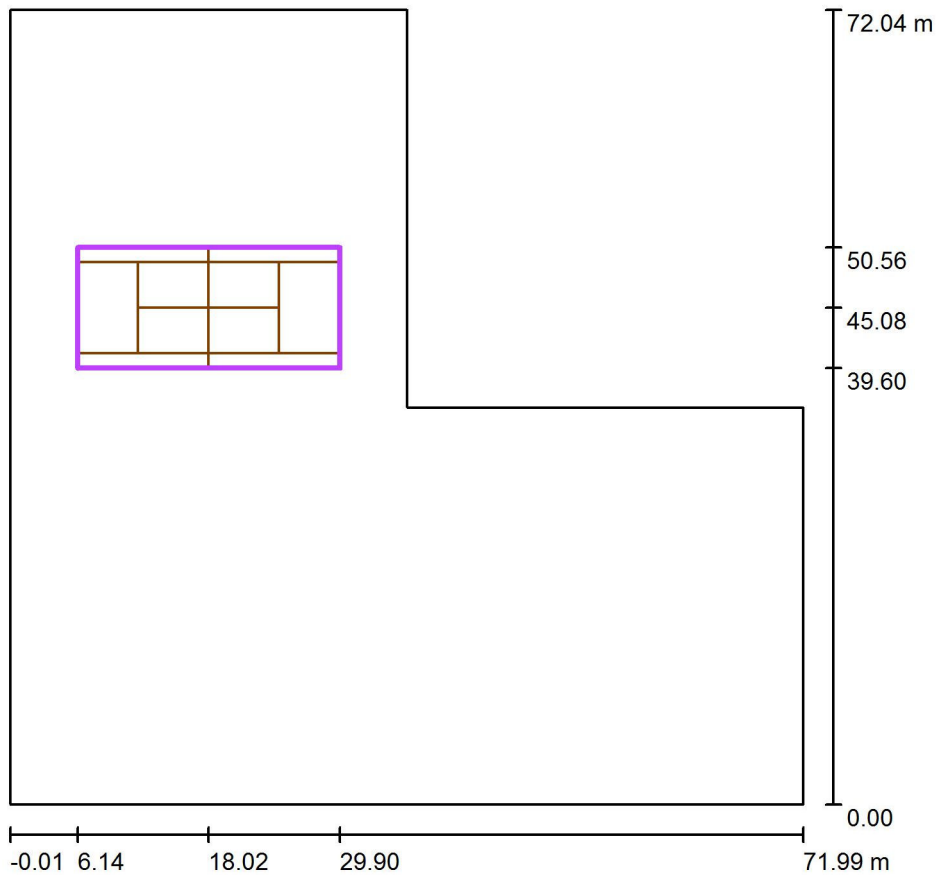
Results overview

No.	Type	$E_{av}$ [lx]	$E_{min}$ [lx]	$E_{max}$ [lx]	u0	$E_{min} / E_{max}$	$E_{h\ m} / E_m$	H [m]	Camera
1	perpendicular	443	343	516	0.78	0.67	/	0.000	/

$E_{h\ m} / E_m$  = Relationship between middle horizontal and vertical illuminance, H = Measuring Height

Operator  
 Telephone  
 Fax  
 e-Mail

Exterior Scene 1 / Calculation Grid 3 / Summary



Scale 1 : 687

Position: (18.019 m, 45.078 m, 0.000 m)  
 Size: (23.763 m, 10.954 m)  
 Rotation: (0.0°, 0.0°, 0.0°)  
 Type: Normal, Grid: 13 x 5 Points  
 Belongs to the following sport arena: Tennis 3

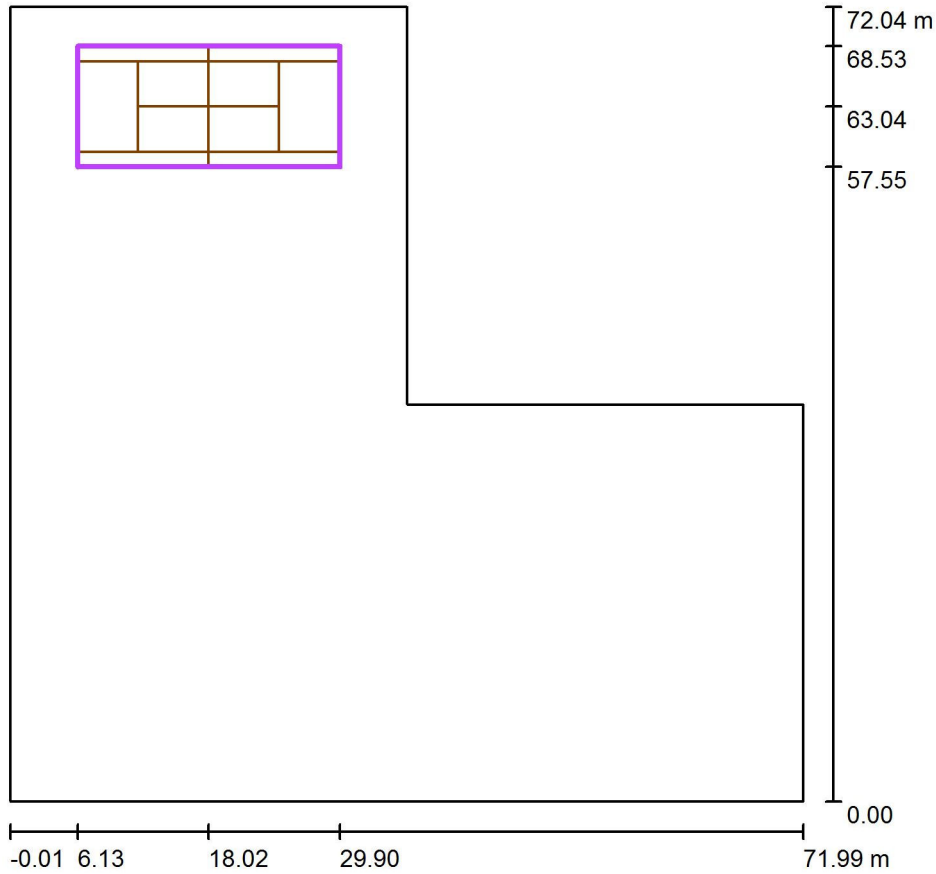
Results overview

No.	Type	$E_{av}$ [lx]	$E_{min}$ [lx]	$E_{max}$ [lx]	u0	$E_{min} / E_{max}$	$E_{h\ m} / E_m$	H [m]	Camera
1	perpendicular	442	352	511	0.80	0.69	/	0.000	/

$E_{h\ m} / E_m$  = Relationship between middle horizontal and vertical illuminance, H = Measuring Height

Operator  
 Telephone  
 Fax  
 e-Mail

Exterior Scene 1 / Calculation Grid 4 / Summary



Scale 1 : 687

Position: (18.015 m, 63.042 m, 0.000 m)  
 Size: (23.770 m, 10.983 m)  
 Rotation: (0.0°, 0.0°, 0.0°)  
 Type: Normal, Grid: 13 x 7 Points  
 Belongs to the following sport arena: Tennis 4

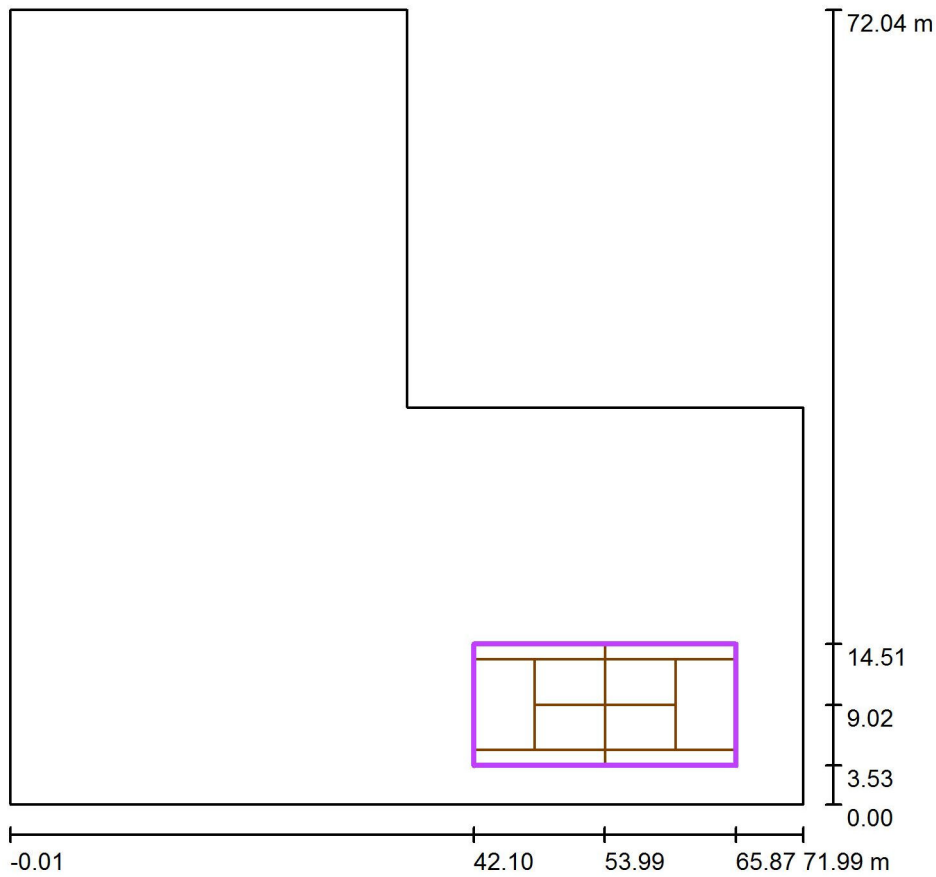
Results overview

No.	Type	$E_{av}$ [lx]	$E_{min}$ [lx]	$E_{max}$ [lx]	u0	$E_{min} / E_{max}$	$E_{h\ m} / E_m$	H [m]	Camera
1	perpendicular	407	0.00	483	0.00	0.00	/	0.000	/

$E_{h\ m} / E_m$  = Relationship between middle horizontal and vertical illuminance, H = Measuring Height

Operator  
 Telephone  
 Fax  
 e-Mail

Exterior Scene 1 / Calculation Grid 5 / Summary



Scale 1 : 687

Position: (53.986 m, 9.022 m, 0.000 m)  
 Size: (23.772 m, 10.975 m)  
 Rotation: (0.0°, 0.0°, 0.0°)  
 Type: Normal, Grid: 13 x 7 Points  
 Belongs to the following sport arena: Tennis 5

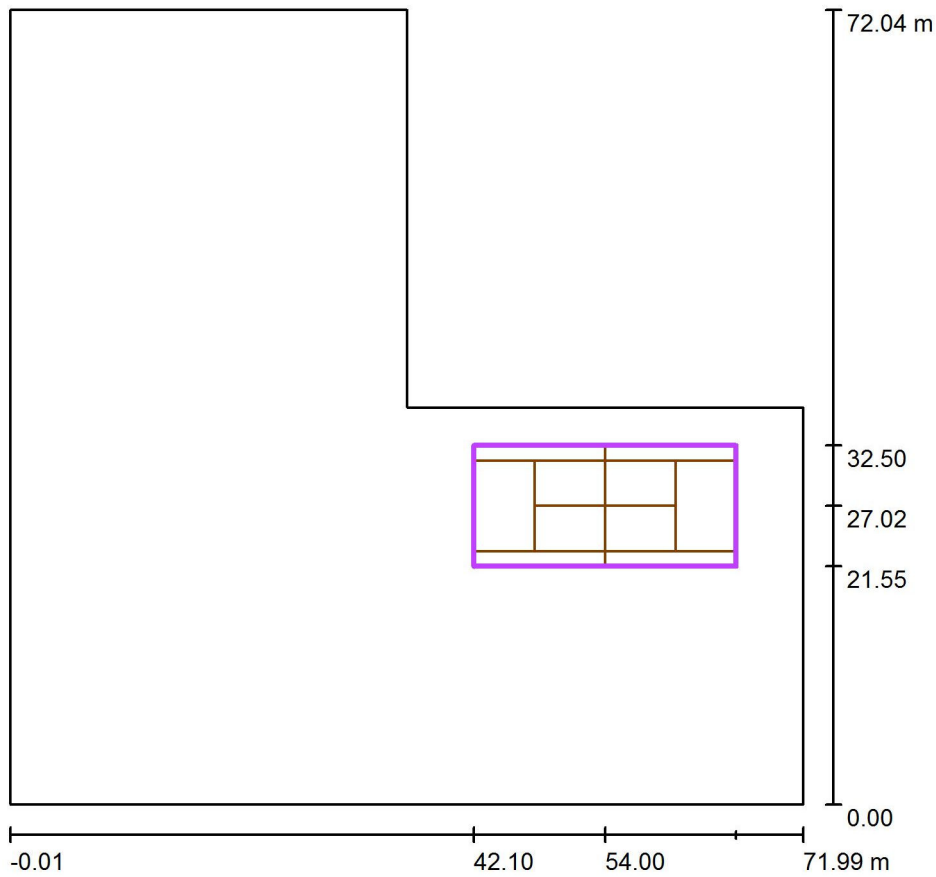
Results overview

No.	Type	$E_{av}$ [lx]	$E_{min}$ [lx]	$E_{max}$ [lx]	u0	$E_{min} / E_{max}$	$E_{h\ m} / E_m$	H [m]	Camera
1	perpendicular	403	2.30	481	0.01	0.00	/	0.000	/

$E_{h\ m} / E_m$  = Relationship between middle horizontal and vertical illuminance, H = Measuring Height

Operator  
 Telephone  
 Fax  
 e-Mail

Exterior Scene 1 / Calculation Grid 6 / Summary



Scale 1 : 687

Position: (54.000 m, 27.023 m, 0.000 m)  
 Size: (23.800 m, 10.953 m)  
 Rotation: (0.0°, 0.0°, 0.0°)  
 Type: Normal, Grid: 13 x 5 Points  
 Belongs to the following sport arena: Tennis 6

Results overview

No.	Type	$E_{av}$ [lx]	$E_{min}$ [lx]	$E_{max}$ [lx]	u0	$E_{min} / E_{max}$	$E_{h\ m} / E_m$	H [m]	Camera
1	perpendicular	406	300	489	0.74	0.61	/	0.000	/

$E_{h\ m} / E_m$  = Relationship between middle horizontal and vertical illuminance, H = Measuring Height