

Operator
Telephone
Fax
e-Mail

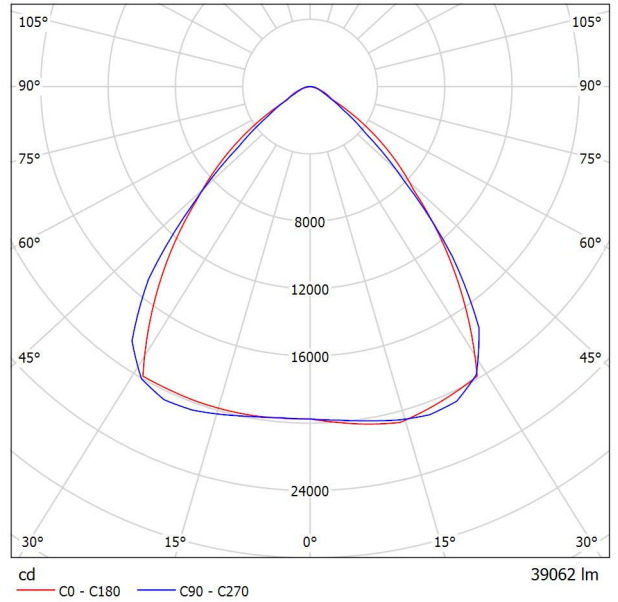
Coydon Lighting KD-FLN-W250 250W LED Flood Light / Luminaire Data Sheet

See our luminaire catalog for an image of the luminaire.



Luminaire classification according to CIE: 100
CIE flux code: 73 96 99 100 100

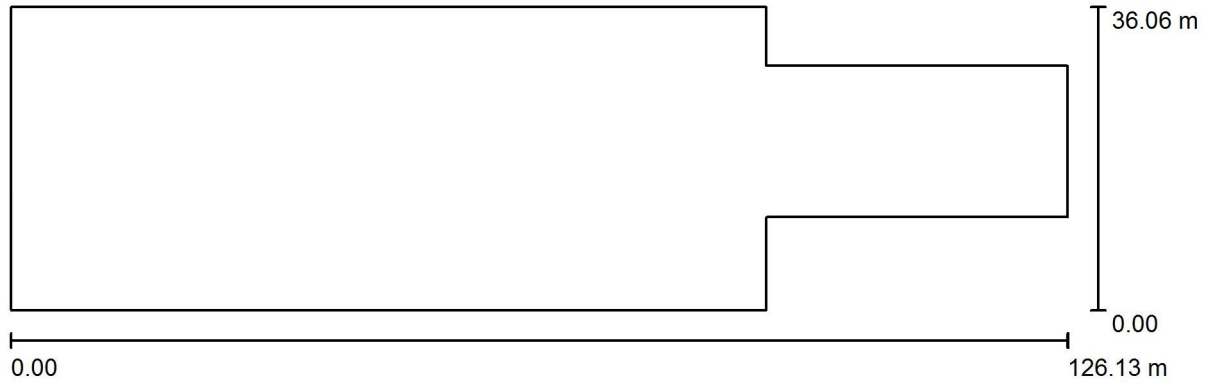
Luminous emittance 1:



Due to missing symmetry properties, no UGR table can be displayed for this luminaire.

Operator
 Telephone
 Fax
 e-Mail

Exterior Scene 1 / Planning data



Light loss factor: 0.80, ULR (Upward Light Ratio): 3.5%

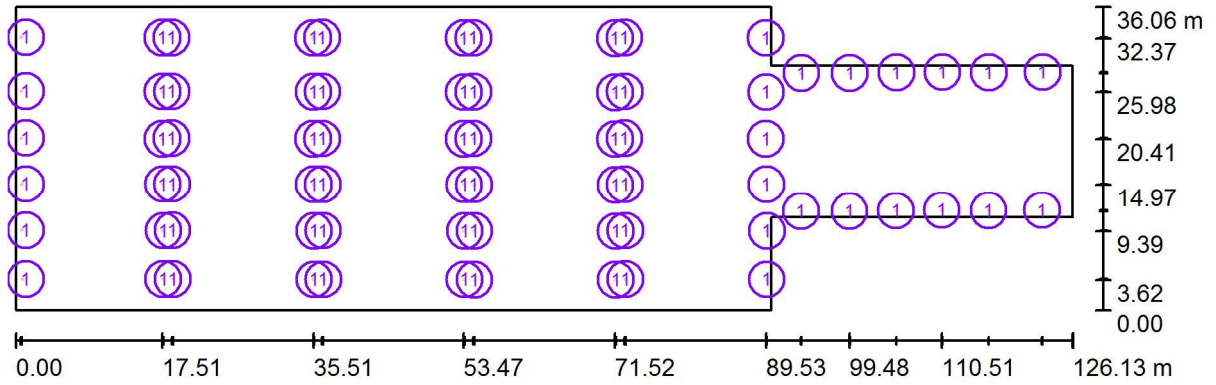
Scale 1:902

Luminaire Parts List

No.	Pieces	Designation (Correction Factor)	Φ (Luminaire) [lm]	Φ (Lamps) [lm]	P [W]
1	72	Coydon Lighting KD-FLN-W250 250W LED Flood Light (1.000)	39062	39062	250.8
Total:			2812499	Total: 2812499	18057.6

Operator
 Telephone
 Fax
 e-Mail

Exterior Scene 1 / Luminaires (layout plan)



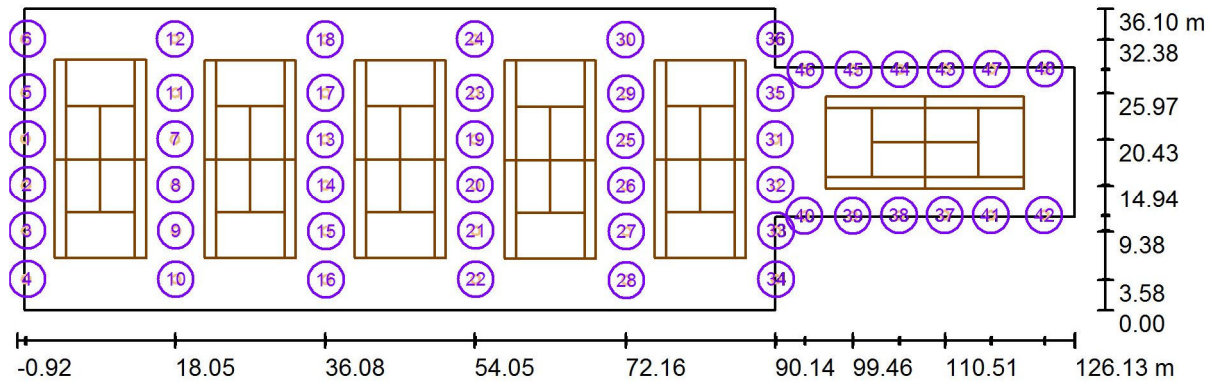
Scale 1 : 902

Luminaire Parts List

No.	Pieces	Designation
1	72	Coydon Lighting KD-FLN-W250 250W LED Flood Light

Operator
 Telephone
 Fax
 e-Mail

Exterior Scene 1 / Pole Positions (Coordinates List)



Scale 1 : 909

List of the Pole Positions

No.	Designation	Position [m]		
		X	Y	Z
1	Pole Position 1	0.087	20.558	0.000
2	Pole Position 1	0.139	15.069	0.000
3	Pole Position 1	0.195	9.503	0.000
4	Pole Position 1	0.195	3.710	0.000

Operator
Telephone
Fax
e-Mail

Exterior Scene 1 / Pole Positions (Coordinates List)

List of the Pole Positions

No.	Designation	Position [m]		
		X	Y	Z
5	Pole Position 1	0.112	26.097	0.000
6	Pole Position 1	0.082	32.504	0.000
7	Pole Position 1	18.055	20.533	0.000
8	Pole Position 1	18.107	15.045	0.000
9	Pole Position 1	18.163	9.479	0.000
10	Pole Position 1	18.163	3.686	0.000
11	Pole Position 1	18.080	26.073	0.000
12	Pole Position 1	18.050	32.480	0.000
13	Pole Position 1	36.083	20.499	0.000
14	Pole Position 1	36.135	15.010	0.000
15	Pole Position 1	36.192	9.444	0.000
16	Pole Position 1	36.192	3.652	0.000
17	Pole Position 1	36.108	26.038	0.000
18	Pole Position 1	36.078	32.445	0.000
19	Pole Position 1	54.059	20.521	0.000
20	Pole Position 1	54.111	15.032	0.000
21	Pole Position 1	54.168	9.466	0.000
22	Pole Position 1	54.168	3.674	0.000
23	Pole Position 1	54.084	26.060	0.000
24	Pole Position 1	54.054	32.467	0.000
25	Pole Position 1	72.169	20.432	0.000
26	Pole Position 1	72.221	14.943	0.000
27	Pole Position 1	72.277	9.377	0.000
28	Pole Position 1	72.277	3.584	0.000
29	Pole Position 1	72.194	25.971	0.000
30	Pole Position 1	72.164	32.378	0.000
31	Pole Position 1	90.140	20.526	0.000
32	Pole Position 1	90.192	15.037	0.000
33	Pole Position 1	90.249	9.471	0.000
34	Pole Position 1	90.249	3.678	0.000
35	Pole Position 1	90.166	26.065	0.000
36	Pole Position 1	90.135	32.472	0.000
37	Pole Position 1	110.511	11.355	0.000
38	Pole Position 1	105.022	11.304	0.000
39	Pole Position 1	99.456	11.247	0.000
40	Pole Position 1	93.664	11.247	0.000

Operator
Telephone
Fax
e-Mail

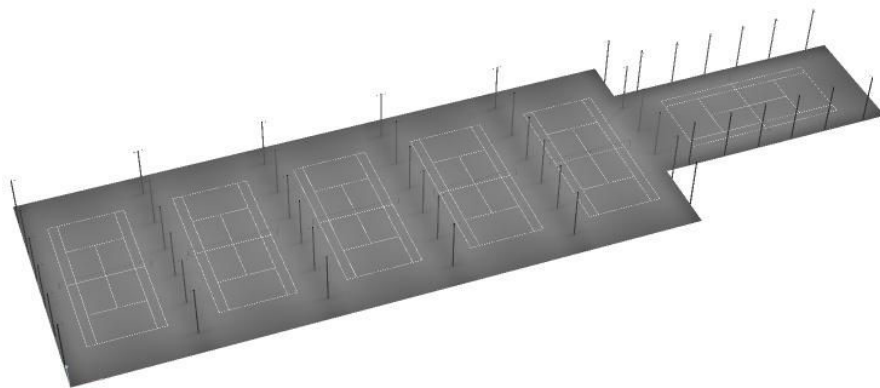
Exterior Scene 1 / Pole Positions (Coordinates List)

List of the Pole Positions

No.	Designation	Position [m]		
		X	Y	Z
41	Pole Position 1	116.050	11.330	0.000
42	Pole Position 1	122.458	11.360	0.000
43	Pole Position 1	110.608	28.912	0.000
44	Pole Position 1	105.119	28.860	0.000
45	Pole Position 1	99.554	28.804	0.000
46	Pole Position 1	93.761	28.804	0.000
47	Pole Position 1	116.148	28.887	0.000
48	Pole Position 1	122.555	28.917	0.000

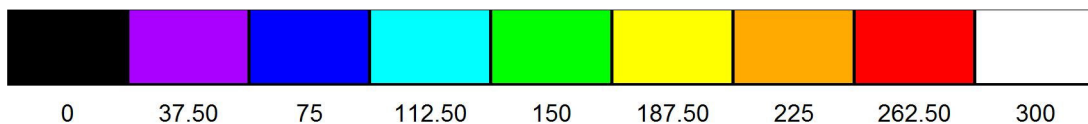
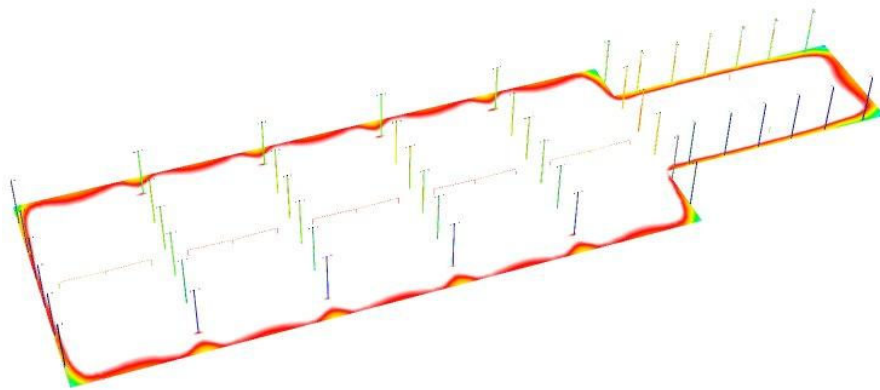
Operator
Telephone
Fax
e-Mail

Exterior Scene 1 / 3D Rendering



Operator
Telephone
Fax
e-Mail

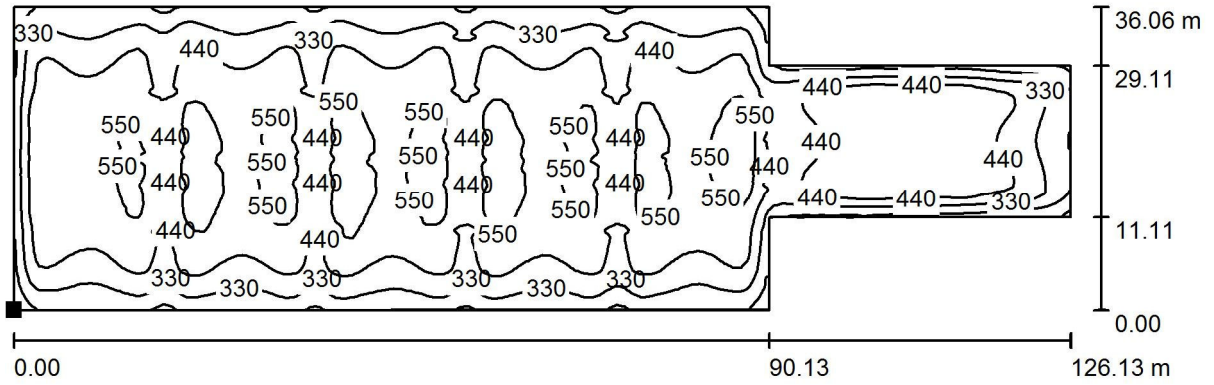
Exterior Scene 1 / False Color Rendering



lx

Operator
 Telephone
 Fax
 e-Mail

Exterior Scene 1 / Ground Element 1 / Surface 1 / Isolines (E)



Position of surface in external scene:
 Marked point:
 (0.000 m, 0.000 m, 0.000 m)

Values in Lux, Scale 1 : 902

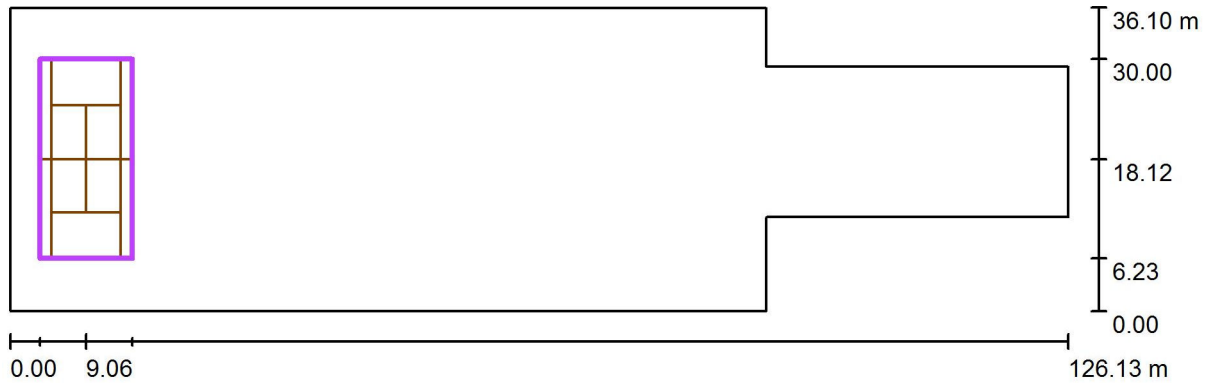


Grid: 128 x 128 Points

E_{av} [lx]	E_{min} [lx]	E_{max} [lx]	u_0	E_{min} / E_{max}
447	96	639	0.214	0.149

Operator
 Telephone
 Fax
 e-Mail

Exterior Scene 1 / Calculation Grid 1 / Summary



Scale 1 : 902

Position: (9.060 m, 18.115 m, 0.000 m)
 Size: (23.760 m, 10.957 m)
 Rotation: (0.0°, 0.0°, -90.0°)
 Type: Normal, Grid: 13 x 5 Points
 Belongs to the following sport arena: Tennis 1

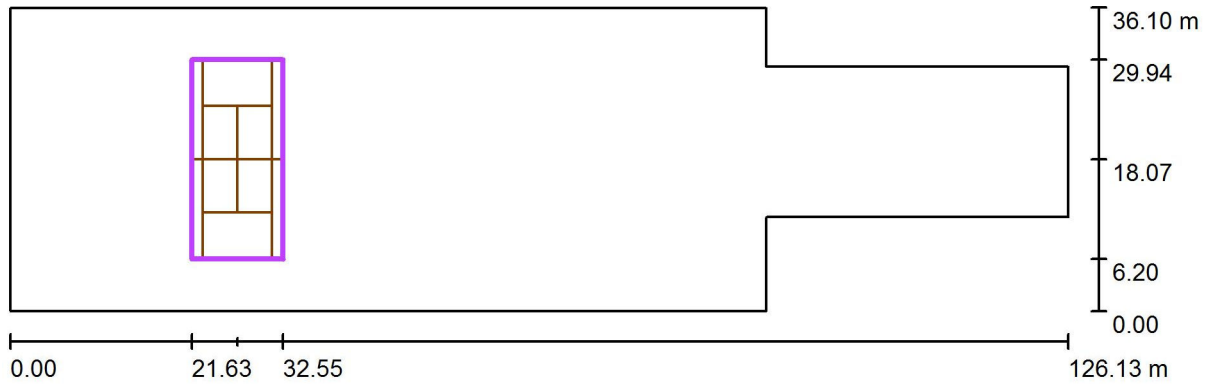
Results overview

No.	Type	E_{av} [lx]	E_{min} [lx]	E_{max} [lx]	u0	E_{min} / E_{max}	$E_{h\ m} / E_m$	H [m]	Camera
1	perpendicular	506	412	578	0.81	0.71	/	0.000	/

$E_{h\ m} / E_m$ = Relationship between middle horizontal and vertical illuminance, H = Measuring Height

Operator
 Telephone
 Fax
 e-Mail

Exterior Scene 1 / Calculation Grid 2 / Summary



Scale 1 : 902

Position: (27.092 m, 18.067 m, 0.000 m)
 Size: (23.738 m, 10.921 m)
 Rotation: (0.0°, 0.0°, 90.0°)
 Type: Normal, Grid: 13 x 5 Points
 Belongs to the following sport arena: Tennis 2

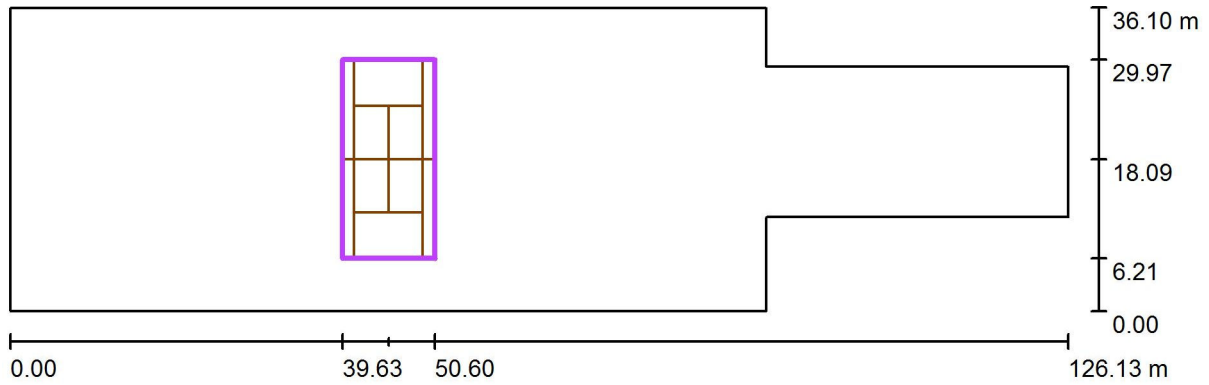
Results overview

No.	Type	E_{av} [lx]	E_{min} [lx]	E_{max} [lx]	u0	E_{min} / E_{max}	$E_{h\ m} / E_m$	H [m]	Camera
1	perpendicular	528	297	590	0.56	0.50	/	0.000	/

$E_{h\ m} / E_m$ = Relationship between middle horizontal and vertical illuminance, H = Measuring Height

Operator
 Telephone
 Fax
 e-Mail

Exterior Scene 1 / Calculation Grid 3 / Summary



Scale 1 : 902

Position: (45.116 m, 18.087 m, 0.000 m)
 Size: (23.760 m, 10.967 m)
 Rotation: (0.0°, 0.0°, 90.0°)
 Type: Normal, Grid: 13 x 7 Points
 Belongs to the following sport arena: Tennis 3

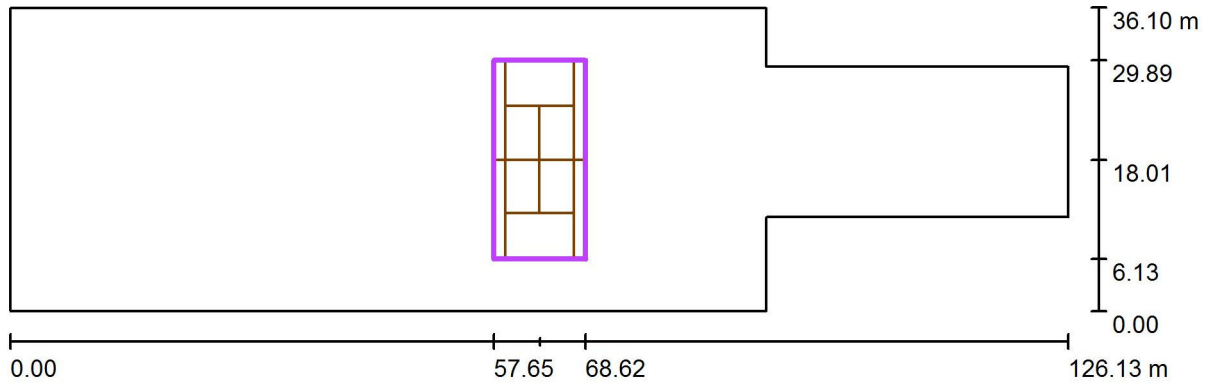
Results overview

No.	Type	E_{av} [lx]	E_{min} [lx]	E_{max} [lx]	u0	E_{min} / E_{max}	$E_{h\ m} / E_m$	H [m]	Camera
1	perpendicular	533	406	596	0.76	0.68	/	0.000	/

$E_{h\ m} / E_m$ = Relationship between middle horizontal and vertical illuminance, H = Measuring Height

Operator
 Telephone
 Fax
 e-Mail

Exterior Scene 1 / Calculation Grid 4 / Summary



Scale 1 : 902

Position: (63.134 m, 18.008 m, 0.000 m)
 Size: (23.755 m, 10.968 m)
 Rotation: (0.0°, 0.0°, 90.0°)
 Type: Normal, Grid: 13 x 7 Points
 Belongs to the following sport arena: Tennis 4

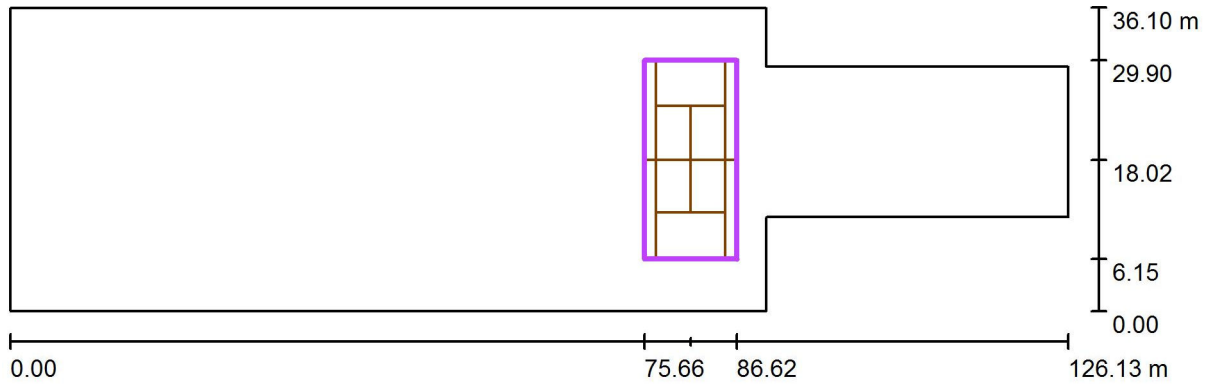
Results overview

No.	Type	E_{av} [lx]	E_{min} [lx]	E_{max} [lx]	u0	E_{min} / E_{max}	$E_{h\ m} / E_m$	H [m]	Camera
1	perpendicular	529	380	593	0.72	0.64	/	0.000	/

$E_{h\ m} / E_m$ = Relationship between middle horizontal and vertical illuminance, H = Measuring Height

Operator
 Telephone
 Fax
 e-Mail

Exterior Scene 1 / Calculation Grid 5 / Summary



Scale 1 : 902

Position: (81.141 m, 18.025 m, 0.000 m)
 Size: (23.754 m, 10.967 m)
 Rotation: (0.0°, 0.0°, 90.0°)
 Type: Normal, Grid: 13 x 7 Points
 Belongs to the following sport arena: Tennis 5

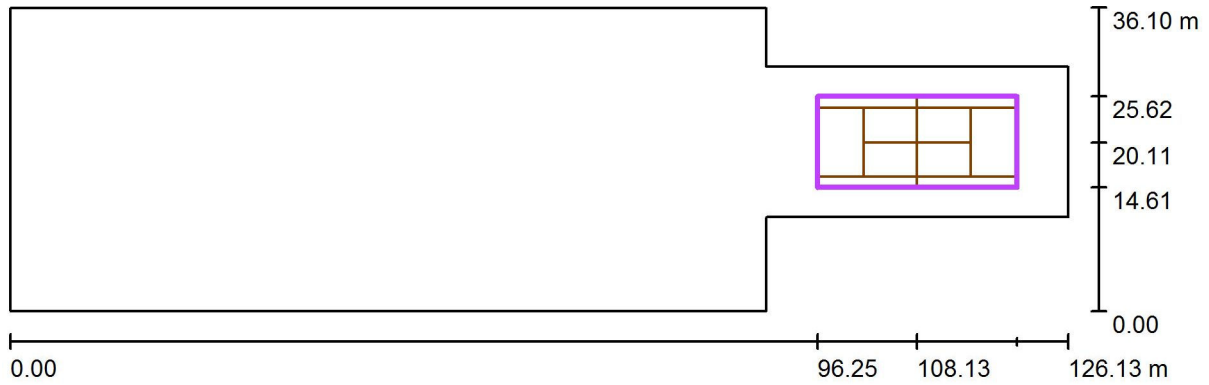
Results overview

No.	Type	E_{av} [lx]	E_{min} [lx]	E_{max} [lx]	u0	E_{min} / E_{max}	$E_{h\ m} / E_m$	H [m]	Camera
1	perpendicular	525	419	632	0.80	0.66	/	0.000	/

$E_{h\ m} / E_m$ = Relationship between middle horizontal and vertical illuminance, H = Measuring Height

Operator
 Telephone
 Fax
 e-Mail

Exterior Scene 1 / Calculation Grid 6 / Summary



Scale 1 : 902

Position: (108.129 m, 20.115 m, 0.000 m)
 Size: (23.760 m, 11.004 m)
 Rotation: (0.0°, 0.0°, 0.0°)
 Type: Normal, Grid: 13 x 7 Points
 Belongs to the following sport arena: Tennis 6

Results overview

No.	Type	E_{av} [lx]	E_{min} [lx]	E_{max} [lx]	u0	E_{min} / E_{max}	$E_{h\ m} / E_m$	H [m]	Camera
1	perpendicular	496	295	538	0.59	0.55	/	0.000	/

$E_{h\ m} / E_m$ = Relationship between middle horizontal and vertical illuminance, H = Measuring Height